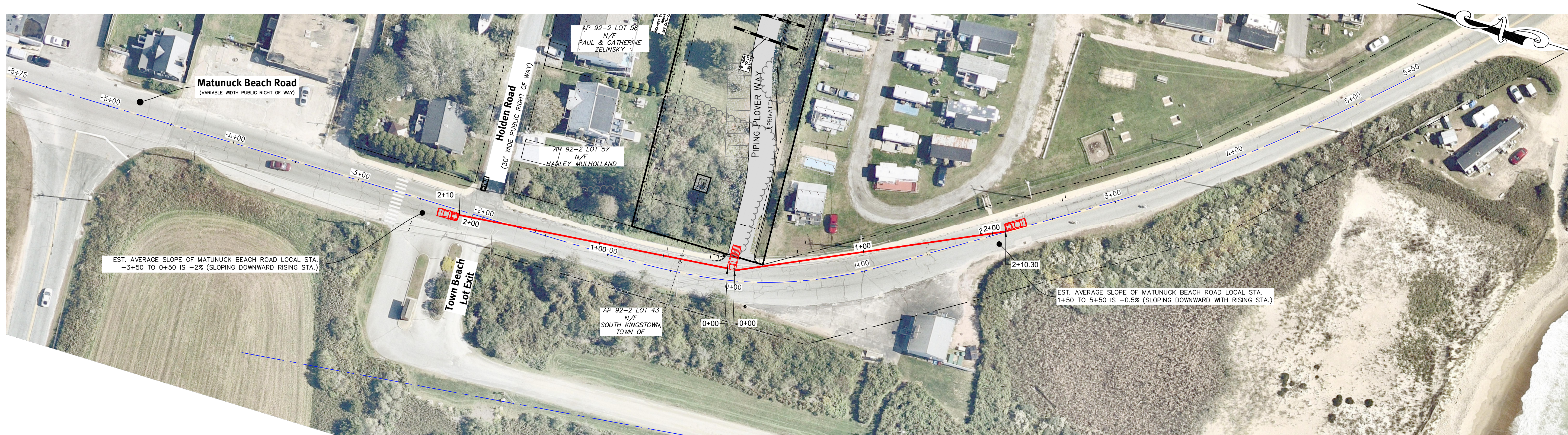
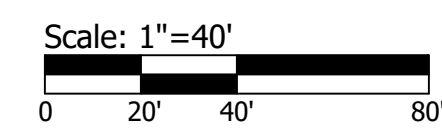


z:\jobs\00 jobs\2017\1.00 douglas enterprises - sk tr-n\dwg\sight line.dwg (dated: 2/9/2022)



**Piping Plover Way Sight Lines**  
1" = 40'



Plan - Sight Distance - Piping Plover  
**Matunuck Beach Condos**

Accessors: Blk 92 - Lot 46  
South Kingstown, Rhode Island  
**Client/Owner**  
**Matunuck Beach Road Partners, LLC**  
P.O. Box 395  
Waketield, RI 02880  
DE Job No: 2389-002 Copyright 2022 by DiPrete Engineering Associates, Inc.

0	02/2022	Plan - Sight Distance	Sr
101		Description	Dr
		Drawn By: S.R.	Design By: S.R.

This plan set must not be used for construction purposes unless stamped 'Issued for Construction' and stamped by a registered Professional Engineer of DiPrete Engineering.  
DiPrete Engineering warrants plans on a DiPrete Engineering plan set only. DiPrete Engineering does not warrant plans by any other party.  
The contractor is responsible for all of the means, methods, safety and construction of the project. DiPrete Engineering does not warrant conformance in the implementation of this plan and design.  
Existing utilities shown on this plan are approximate only. DiPrete Engineering assumes no responsibility for damages incurred due to locations of existing utilities.



Two Stafford Court Cranston, RI 02920  
tel 401-943-1000 fax 401-664-6006 www.diprete-eng.com