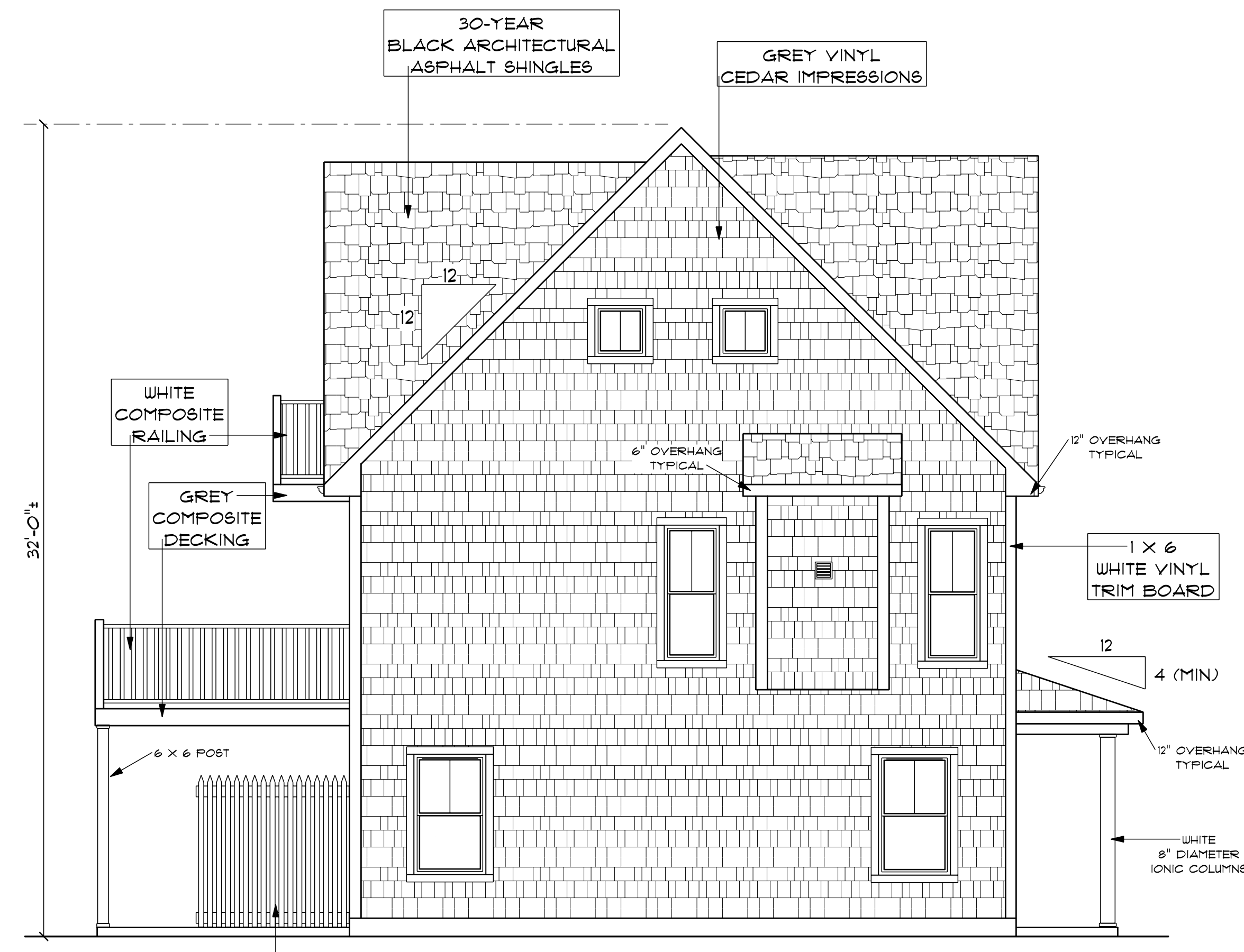


**FIRST FLOOR PLAN 1/4"=1'-0"**

2x6 STUDS @ 16" OC  
 AT ALL EXTERIOR WALLS  
 UNLESS OTHERWISE NOTED

• POINT LOAD FROM ABOVE  
 PROVIDE THE FOLLOWING:  
 (1) SOLID BLOCKING BETWEEN BEAM  
 (OR SILL) AND PLYWOOD SUBFLOOR  
 (2) A MINIMUM OF THREE STUDS IN  
 A BEARING WALL AS BEAM JACKS

**PRELIMINARY PLANS ONLY  
 FOR ZONING AND PRICING ONLY**



**LEFT SIDE ELEVATION 1/4"=1'-0"**

1 x 4  
 WHITE VINYL  
 TRIM BOARD  
 ON ALL WINDOWS  
 AND DOORS

WINDOW SCHEDULE						
TYPICAL HEADERS (2) 2" X 10" TYPICAL HEADER HEIGHT = 6'-10"						
(EXCEPTIONS ARE NOTED ON PLANS)						
NOTE: ALL LUMBER SPECIES FOR HEADERS, JOISTS, AND BEAMS TO BE KD SPRUCE NO. 1 OR BETTER.						
ALL LOADS FOR FLOOR JOISTS, RAFTERS, HEADERS AND BEAMS ARE BASED ON THE FOLLOWING:						
FLOOR JOISTS LIVING AREAS: 40 PSF LIVE LOAD 20 PSF DEAD LOAD						
FLOOR JOISTS SLEEPING AREAS: 30 PSF LIVE LOAD 20 PSF DEAD LOAD						
MANUFACTURER (OR EQUIVALENT): HARVEY WINDOWS MIN. U-FACTOR .35						
UNIT	ROUGH OPENING	TYPE	QTY	AREA / BILL EFF	NET AREA	DESIGN PRESSURE
A	2'-0" X 4'-9 1/2"	DH	12	13.2 / 2'-0"	9.03	50
B	2'-0" X 5'-9 1/2"	DH	8	15.0 / 1'-5"	5.86	50
C	2'-0" X 3'-9 1/2"	DH	6	9.5 / 3'-9"	3.31	50
D	2'-0" X 3'-9 1/2"	DH	2	1.21 / 3'-9"	2.41	50
E	2'-0" X 5'-9 1/2"	DH	4	11.54 / 1'-5"	4.29	50
F	AWING 2'-0 1/2" X 2'-0 1/2"	FIXED	4	4.0 / 4'-10"	N / A	50
G						
H						

DOOR SCHEDULE		
TYPICAL HEADERS (2) 2" X 10" TYPICAL HEADER HEIGHT = 6'-10"		
(EXCEPTIONS ARE NOTED ON PLANS)		
INTERIOR AND EXTERIOR DOOR SIZES ARE NOTED ON PLANS.		
INTERIOR DOORS 6'-10" HIGH (TYPICAL)		
EXTERIOR DOORS 6'-10" HIGH (TYPICAL)		
DESIGN PRESSURE		MINIMUM DESIGN PRESSURE FOR SLIDERS / FRENCH DOORS
		20
DESIGN PRESSURE		DESIGN PRESSURE PROVIDED
WIND ZONE: 10 MPH WIND EXPOSURE: HEIGHT (FAX): 35'-0" PRESSURE ZONES: 4 & 5		25.5 / -28.1 50

**THESE DRAWINGS ARE IN ACCORDANCE WITH THE FOLLOWING DESIGN CRITERIA.**

- RIBCC - 2 - 2019
- WIND DESIGN: ZONE 3 (120 MPH)
- LOAD DESIGN: 40 PSF LIVING AREA LOADS  
30 PSF SLEEPING AREA LOADS  
20 PSF DEAD LOADS  
20 PSF ATTIC LOADS  
60 PSF EXTERIOR DECK LOADS  
30 PSF SNOW LOADS
- FROST DEPTH: MINIMUM 3'-6" DEEP
- CLIMATE ZONE: 5
- CONSTRUCTION TYPE: 5B
- BUILDING HEIGHT: (MAXIMUM 35'-0")  
MEASURED FROM TOP OF FOUNDATION TO RIDGE
- ALL INSULATION IN EXTERIOR WALLS ARE BASED ON THE MINIMUMS AS PER THE PRESCRIPTIVE METHOD OF TABLE N102.1.2 OF THE ENERGY CONSERVATION CODES.

**CUSTOM DUPLEX**  
 PREPARED FOR:  
 DOUGLAS ENTERPRISES  
 MATUNUCK BEACH ROAD  
 SOUTH KINGSTOWN, RI

CONSTRUCTION PLANS ARE DRAFTED FOR SINGLE-USE ONLY.  
 DLR DIMENSIONS, INC.  
 DOES NOT PERMIT THE USE OF PLANS THAT HAVE BEEN TAMPERED WITH BY OUTSIDE PARTIES.

EST. 1985  
**DLR DIMENSIONS**  
 RESIDENTIAL DESIGNERS & CONSULTANTS  
 401.738.3156  
 DLRDIMENSIONS.COM

DLR DIMENSIONS, INC. IS NOT LIABLE FOR CHANGES TO NOTES, CONDITIONS, AND/OR DRAWINGS. ALL DIMENSIONS MUST VERIFY ALL DIMENSIONS AND INQUIRE COMPLIANCE WITH LOCAL CODES PRIOR TO AND DURING CONSTRUCTION.

**SCALE NOTED**

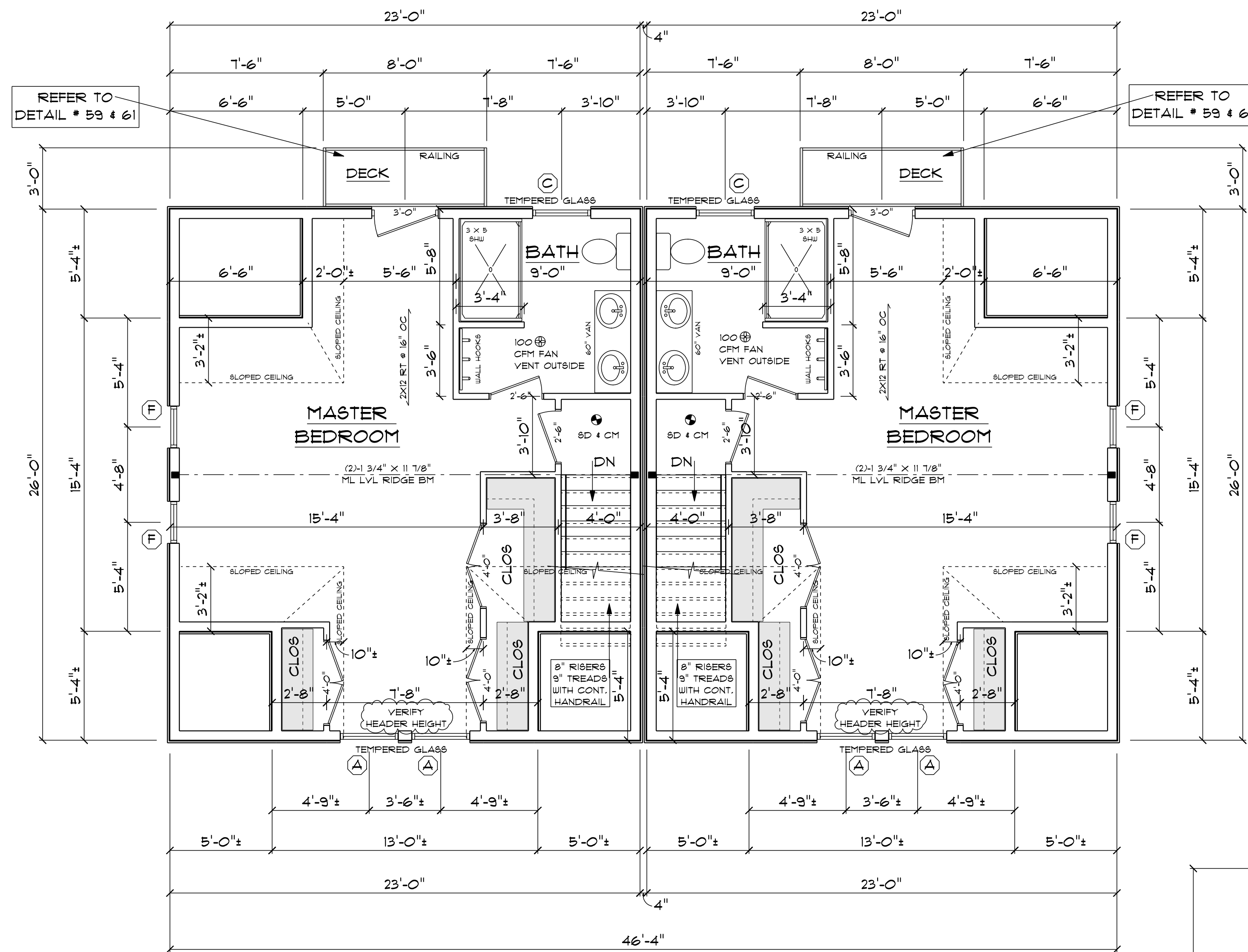
**DATE**  
 Monday, October 18, 2021

**APPROVED**

**DRAWN BY**  
 DRR

**DRAWING NUMBER**  
 5150





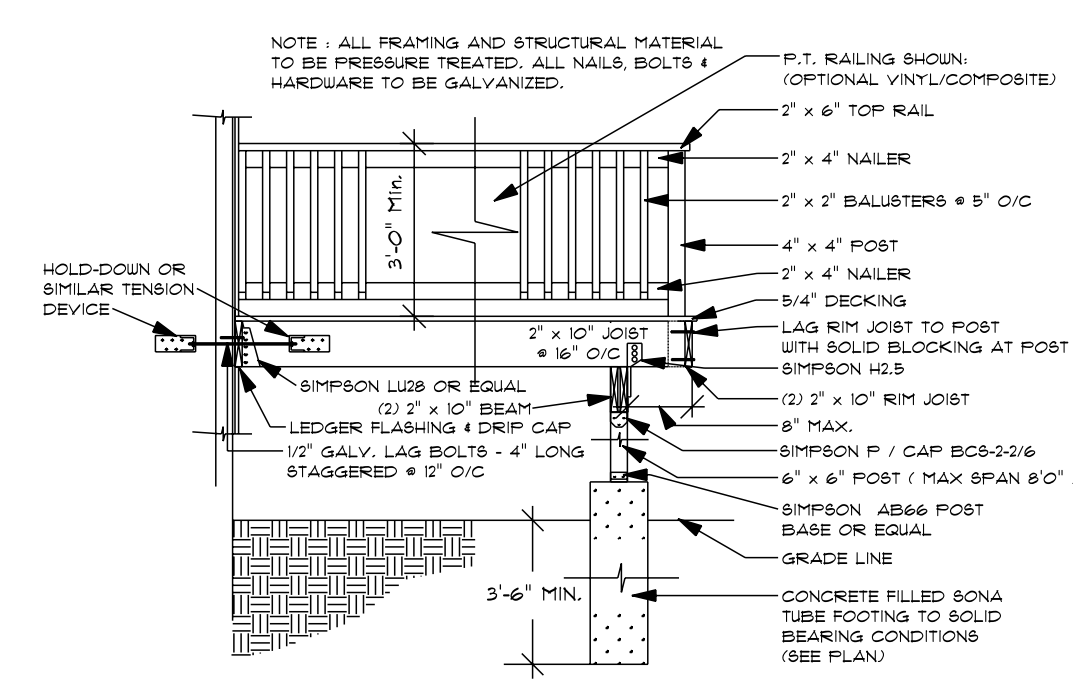
**THIRD FLOOR PLAN 1/4"=1'-0"**

2x6 STUDS @ 16" OC AT ALL EXTERIOR WALLS UNLESS OTHERWISE NOTED

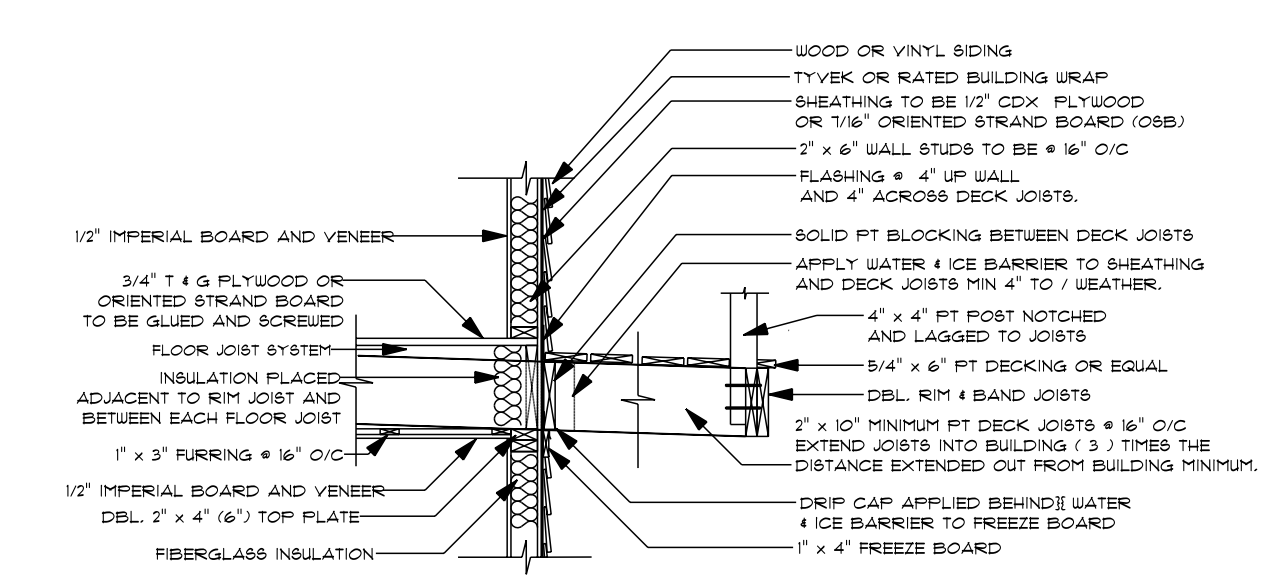
• POINT LOAD FROM ABOVE

PROVIDE THE FOLLOWING:  
 1) SOLID BLOCKING BETWEEN BEAM (OR SILL) AND PLYWOOD SUBFLOOR  
 2) A MINIMUM OF THREE STUDS IN A BEARING WALL AS BEAM JACKS

**PRELIMINARY PLANS ONLY FOR ZONING AND PRICING ONLY**



**TYPICAL DECK DETAIL #61**



**TYPICAL DECK CANTILEVER DETAIL #59**



**BACK ELEVATION 1/4"=1'-0"**

**CUSTOM DUPLEX**  
 PREPARED FOR:  
**DOUGLAS ENTERPRISES**  
 MATUNUCK BEACH ROAD  
 SOUTH KINGSTOWN, RI

CONSTRUCTION PLANS ARE DRAFTED FOR SINGLE-USE ONLY  
 DLR DIMENSIONS, INC. DOES NOT PERMIT THE USE OF PLANS THAT HAVE BEEN TAMPERED WITH BY OUTSIDE PARTIES

EST. 1985  
**DLR DIMENSIONS**  
 RESIDENTIAL DESIGNERS & CONSULTANTS  
 401.738.3156  
 DLRDIMENSIONS.COM

DLR DIMENSIONS, INC. IS NOT LIABLE FOR CHANGES TO NOTES, DIMENSIONS, AND/OR DRAWINGS. BUILDER/CONTRACTOR MUST VERIFY ALL DIMENSIONS AND INSURE COMPLIANCE WITH LOCAL CODES PRIOR TO AND DURING CONSTRUCTION.

SCALE NOTED
DATE Monday, October 18, 2021
APPROVED DRR
DRAWN BY DRR
DRAWING NUMBER 5150