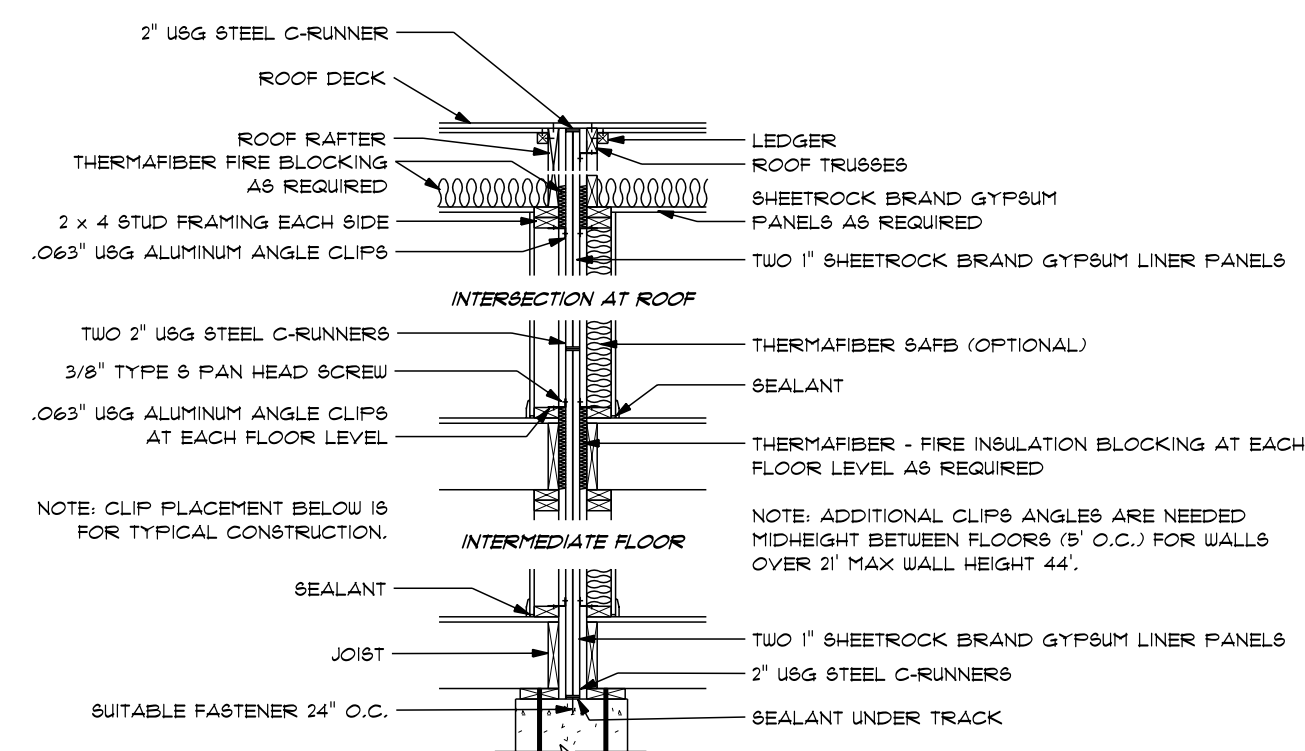


FIRST FLOOR PLAN 1/4"=1'-0"

FIRST FLOOR: 744 SQ FT PER UNIT

2X6 STUDS @ 16" OC AT ALL EXTERIOR WALLS UNLESS OTHERWISE NOTED

POINT LOAD FROM ABOVE PROVIDE THE FOLLOWING:
 1) SOLID BLOCKING BETWEEN BEAM (OR BILL) AND PLYWOOD SUBFLOOR
 2) A MINIMUM OF THREE STUDS IN A BEARING WALL AS BEAM JACKS



SECTION VIEW

SOLID AREA SEPARATION WALL - 1/2" SHEETROCK BRAND GYPSUM PANELS - TWO (2) 1" SHEETROCK BRAND GYPSUM LINER PANELS SET BETWEEN USG ONE PIECE STEEL STUDS 24" O.C. 2 X 4 UD STUDS 16" O.C. EACH SIDE ON 2 X 4 PLATES MIN. 1/4" FROM LINER PANELS - 2" THERMAFIBER SAFFS IN ONE CAVITY - GYPSUM PANELS WITH 1/4" TYPE III SCREWS 12" O.C. - JOINTS STAG 4 FN. - FERIM CAULKED - UL DES U336

- 54 TL-86-348
- 46 BASED ON 2x44 AND NO SAFFS - TL-86-353
- 58 BASED ON 2x44 AND 2" SAFFS ON BOTH SIDES - TL-88-341
- 51 BASED ON 2x44 AND 3" SAFFS ON ONE SIDE - TL-88-351
- 60 BASED ON 2x44 AND 3" SAFFS BOTH SIDES - TL-89-350
- 45 BASED ON 2x36 3/4" GYPSUM PANELS, NO SAFFS - BBN-130104
- 54 BASED ON 2x36 3/4" GYPSUM PANELS, 2" SAFFS ONE SIDE - BBN-130103
- 51 BASED ON 2x36 3/4" GYPSUM PANELS, 2" SAFFS BOTH SIDES - BBN-130102

PLAN VIEW

PARTY WALL DETAIL ~ 1/2"=1'-0"

REFER TO DETAILED NOTES FOR THE FIRE ASSEMBLY OF THE PARTY WALL. WALL IS NOTED AS UL DESIGN U336

PRELIMINARY PLANS ONLY

HARVEY WINDOWS MIN. U-FACTOR .35					
UNIT	ROUGH OPENING	TYPE	QTY	AREA / BILL EFF	NET AREA
A	2'-10" X 4'-9 1/2"	DH	12	13.2 / 3.1'	5.03
B	2'-4 1/2" X 4'-9 1/2"	DH M/L	6	24.0 / 2.2'	5.03 EA
C	2'-10" X 3'-9 1/2"	DH	8	9.5 / 3.5'	3.31
D					
E					
F					
G					

DOOR SCHEDULE		MINIMUM DESIGN PRESSURE FOR SLIDERS / FRENCH DOORS
TYPICAL HEADER (2) 2" X 10" TYPICAL HEADER HEIGHT - 6'-10" (EXCEPTIONS ARE NOTED ON PLANS)		20
INTERIOR AND EXTERIOR DOOR SIZES ARE NOTED ON PLANS.		
INTERIOR DOORS 6'-10" HIGH (TYPICAL) EXTERIOR DOORS 6'-10" HIGH (TYPICAL)		
DESIGN PRESSURE		DESIGN PRESSURE PROVIDED
WIND ZONE:	110 MPH	21.9 / -23.6
WIND EXPOSURE:	C	
HEIGHT (MAX.):	35'-0"	
PRESSURE ZONES:	4 & 5	30

THESE DRAWINGS ARE IN ACCORDANCE WITH THE FOLLOWING DESIGN CRITERIA.

1. RIBC - 2 - 2019
2. WIND DESIGN: ZONE 2 (110 MPH)
3. LOAD DESIGN: 40 PSF LIVING AREA LOADS
30 PSF SLEEPING AREA LOADS
20 PSF DEAD LOADS
20 PSF ATTIC LOADS
60 PSF EXTERIOR DECK LOADS
30 PSF SNOW LOADS
4. FROST DEPTH: MINIMUM 3'-6" DEEP
5. CLIMATE ZONE: 5
6. CONSTRUCTION TYPE: 5B
7. BUILDING HEIGHT: (MAXIMUM 35'-0") MEASURED FROM TOP OF FOUNDATION TO RIDGE
8. ALL INSULATION IN EXTERIOR WALLS ARE BASED ON THE MINIMUM AS PER THE PRESCRIPTIVE METHOD OF TABLE N102.1.2 OF THE ENERGY CONSERVATION CODES.

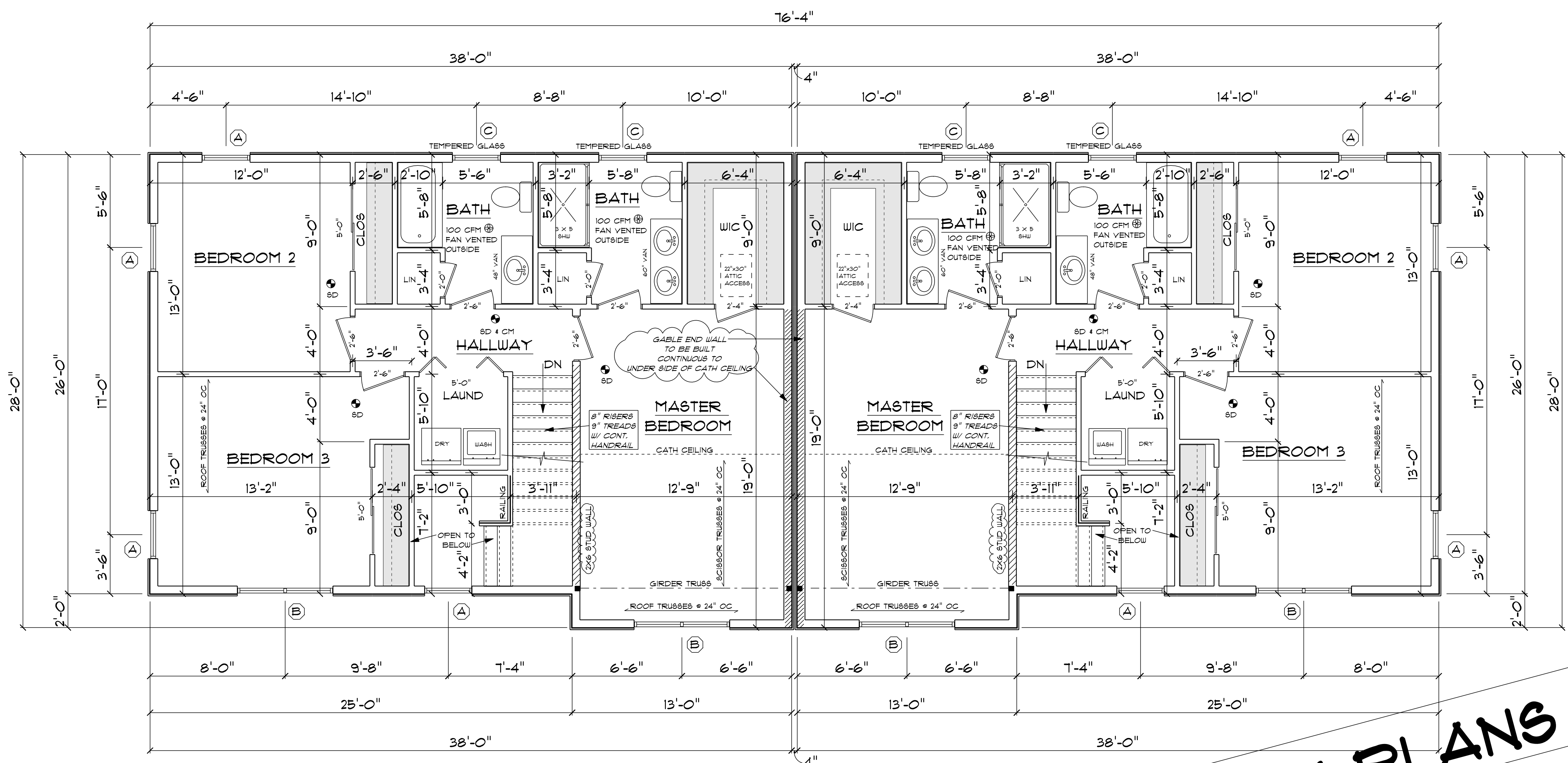
CUSTOM DUPLEX
 PREPARED FOR:
 J THOMAS CONSTRUCTION
 MAGNOLIA LANE (PHASE 2)
 WAKEFIELD, RI

CONSTRUCTION PLANS ARE DRAFTED FOR SINGLE-USE ONLY. DLR DIMENSIONS, INC. DOES NOT PERMIT THE USE OF PLANS THAT HAVE BEEN TAMPERED WITH BY OUTSIDE PARTIES.

EST. 1986
DLR DIMENSIONS
 RESIDENTIAL DESIGNERS & CONSULTANTS
 401.738.3156
 DLRDIMENSIONS.COM

DLR DIMENSIONS, INC. IS NOT LIABLE FOR CHANGES TO NOTES AND/OR DRAWINGS. ALL DIMENSIONS MUST VERIFY ALL LOCAL CODES WITH LOCAL CODES PRIOR TO AND DURING CONSTRUCTION.

SCALE NOTED
 DATE Monday, August 2, 2021
 APPROVED
 DRR
 DRAWN BY DRR
 DRAWING NUMBER 6223

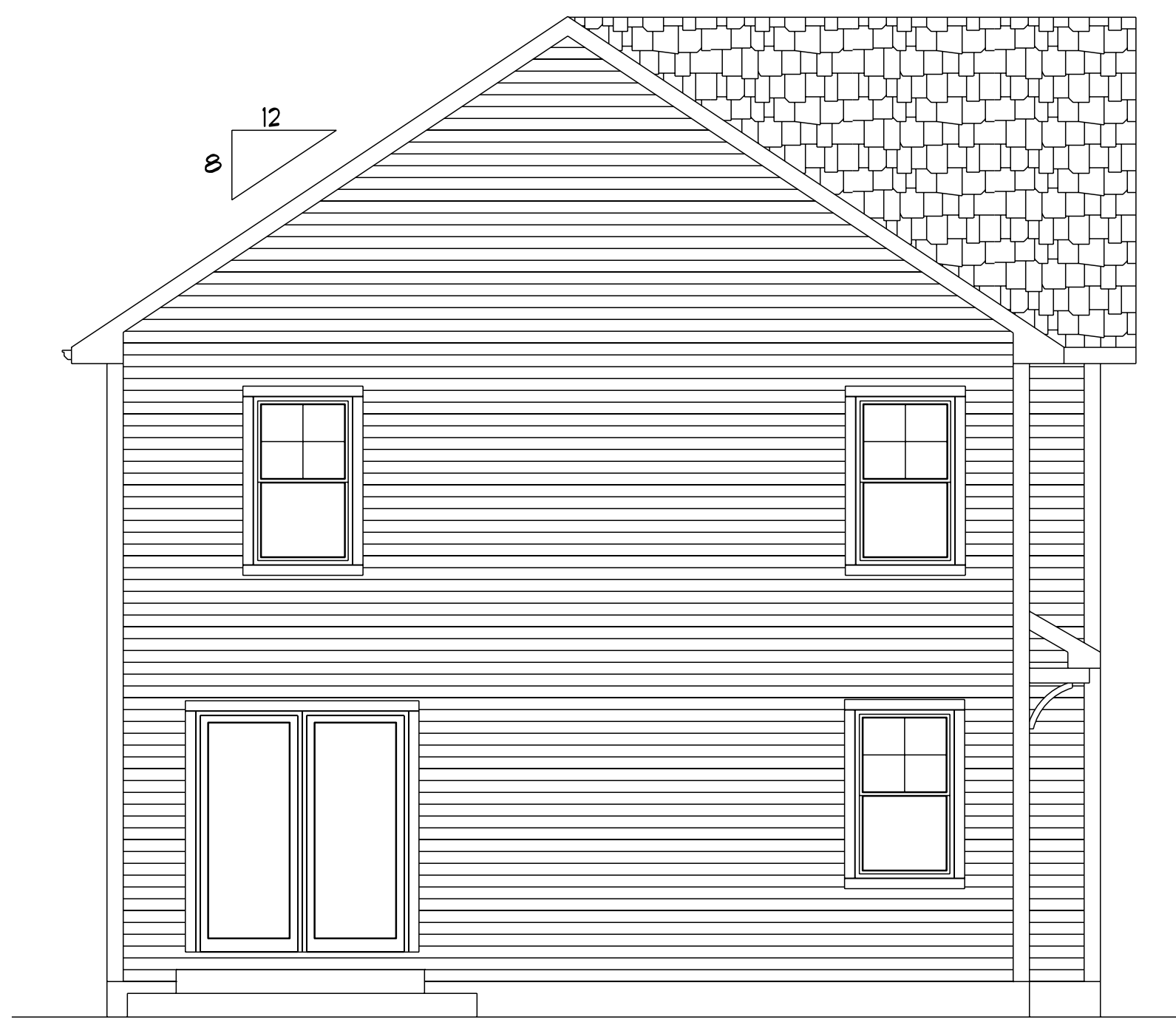


SECOND FLOOR PLAN 1/4"=1'-0"

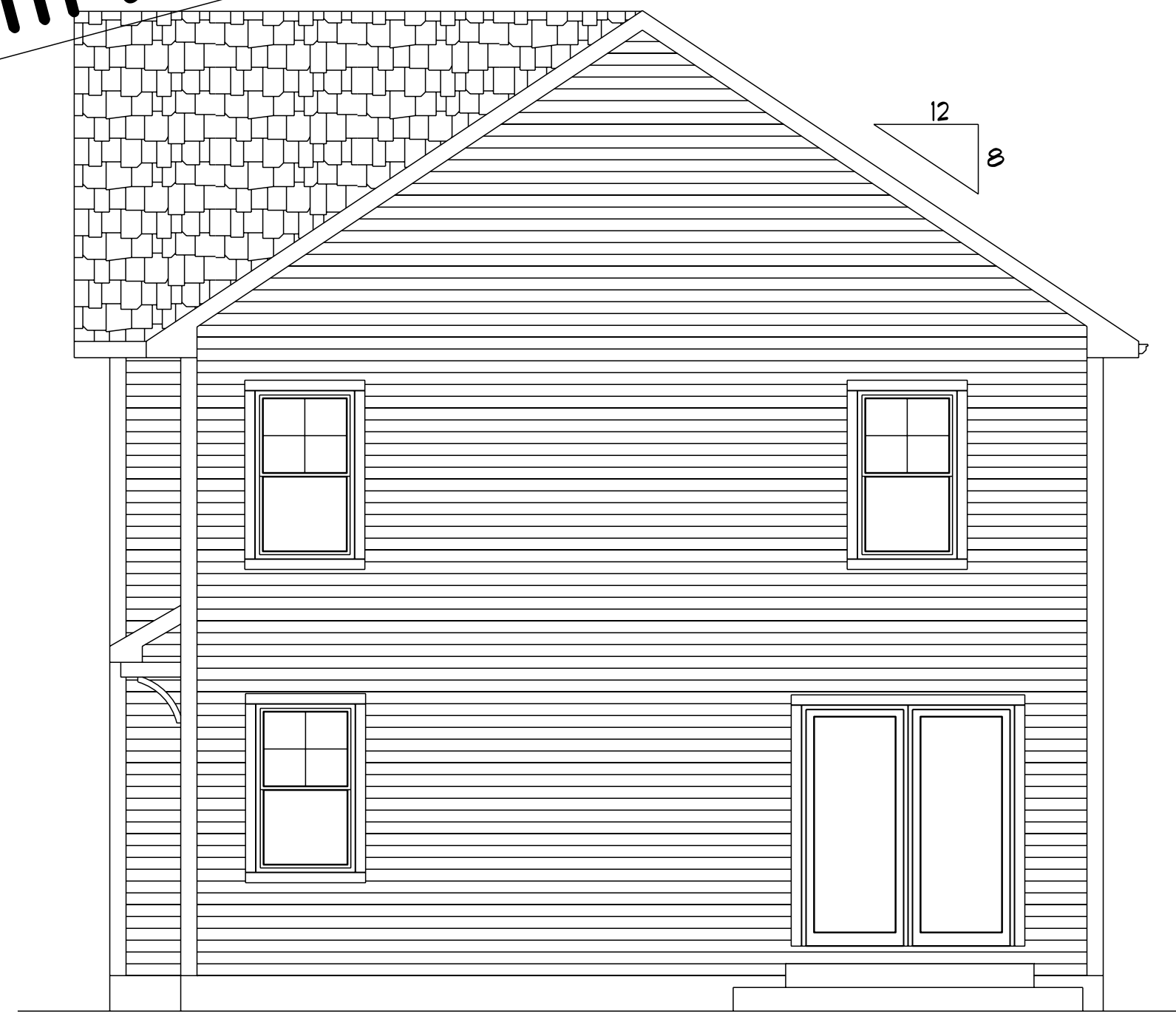
- POINT LOAD FROM ABOVE PROVIDE THE FOLLOWING:
1) SOLID BLOCKING BETWEEN BEAM (OR SILL) AND PLYWOOD SUBFLOOR
2) A MINIMUM OF THREE STUDS IN A BEARING WALL AS BEAM JACKS
- 2X6 STUDS @ 16" OC AT ALL EXTERIOR WALLS UNLESS OTHERWISE NOTED

SECOND FLOOR: 1014 SQ FT PER UNIT

PRELIMINARY PLANS ONLY



LEFT SIDE ELEVATION 1/4"=1'-0"



RIGHT SIDE ELEVATION 1/4"=1'-0"

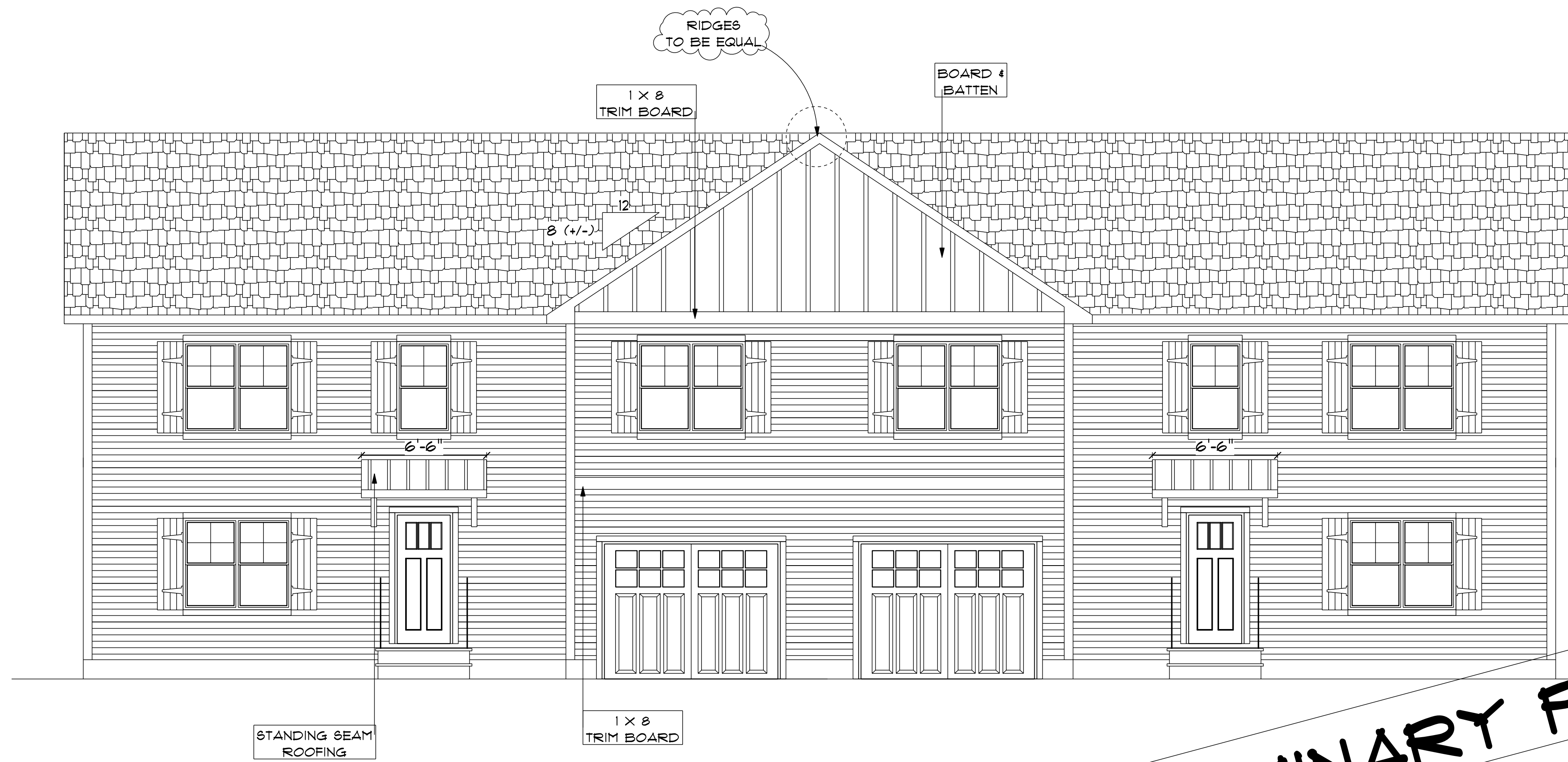
CUSTOM DUPLEX
PREPARED FOR:
J THOMAS CONSTRUCTION
MAGNOLIA LANE (PHASE 2)
WAKEFIELD, RI

CONSTRUCTION PLANS ARE DRAFTED FOR SINGLE-USE ONLY.
DLR DIMENSIONS, INC. DOES NOT PERMIT THE USE OF PLANS THAT HAVE BEEN TAMPERED WITH BY OUTSIDE PARTIES.

EST. 1986
DLR DIMENSIONS
RESIDENTIAL DESIGNERS & CONSULTANTS
401.738.3156
DLRDIMENSIONS.COM

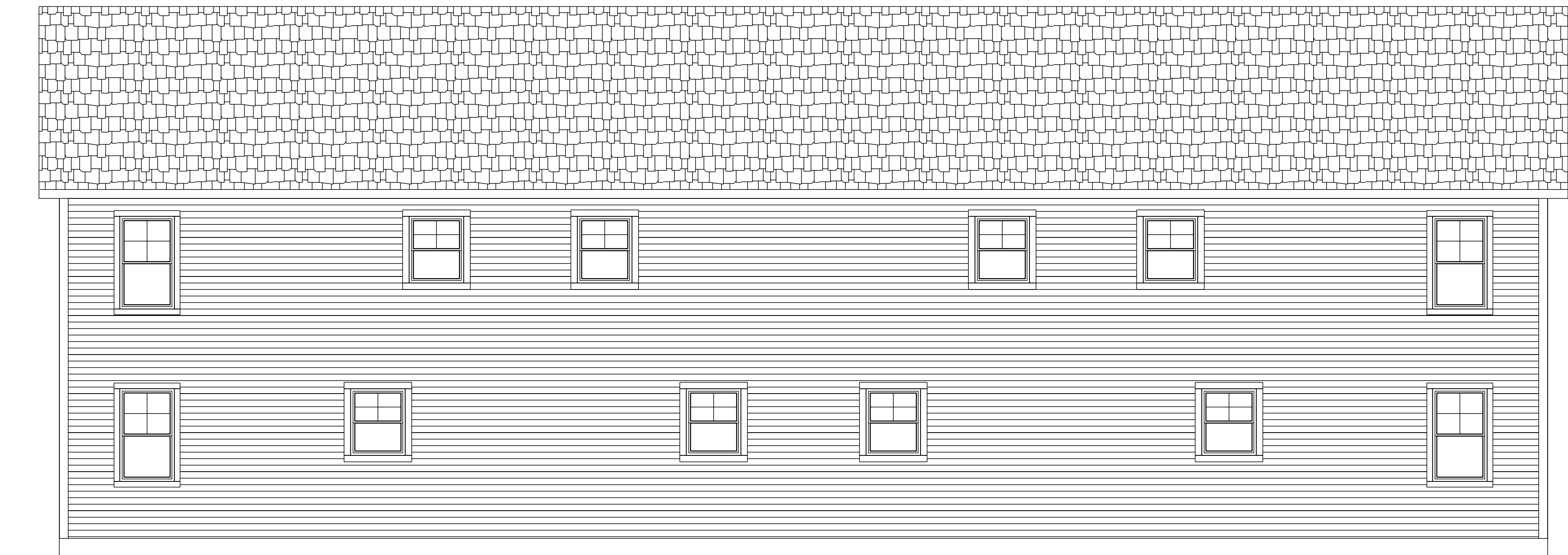
DLR DIMENSIONS, INC. IS NOT LIABLE FOR CHANGES TO NOTES AND/OR DRAWINGS. BUILDER/CONTRACTOR MUST VERIFY ALL DIMENSIONS AND INSURE COMPLIANCE WITH LOCAL CODES PRIOR TO AND DURING CONSTRUCTION.

SCALE NOTED
DATE Monday, August 2, 2021
APPROVED DRR
DRAWN BY DRR
DRAWING NUMBER 6223



FRONT ELEVATION 1/4"=1'-0"

PRELIMINARY PLANS ONLY



BACK ELEVATION 1/4"=1'-0"

CUSTOM DUPLEX
 PREPARED FOR:
 J THOMAS CONSTRUCTION
 MAGNOLIA LANE (PHASE 2)
 WAKEFIELD, RI

CONSTRUCTION PLANS ARE DRAFTED FOR SINGLE-USE ONLY. DLR DIMENSIONS, INC. DOES NOT PERMIT THE USE OF PLANS THAT HAVE BEEN TAMPERED WITH BY OUTSIDE PARTIES.

EST. 1988
DLR DIMENSIONS
 RESIDENTIAL DESIGNERS & CONSULTANTS
 401.738.3156
 DLRDIMENSIONS.COM

DLR DIMENSIONS, INC. IS NOT LIABLE FOR CHANGES TO NOTES, SPECIFICATIONS, AND/OR DRAWINGS. BUILDER/CONTRACTOR MUST VERIFY ALL DIMENSIONS AND INSURE COMPLIANCE WITH LOCAL CODES PRIOR TO AND DURING CONSTRUCTION.

SCALE NOTED
 DATE Monday, August 2, 2021
 APPROVED DRR
 DRAWN BY DRR
 DRAWING NUMBER 6223