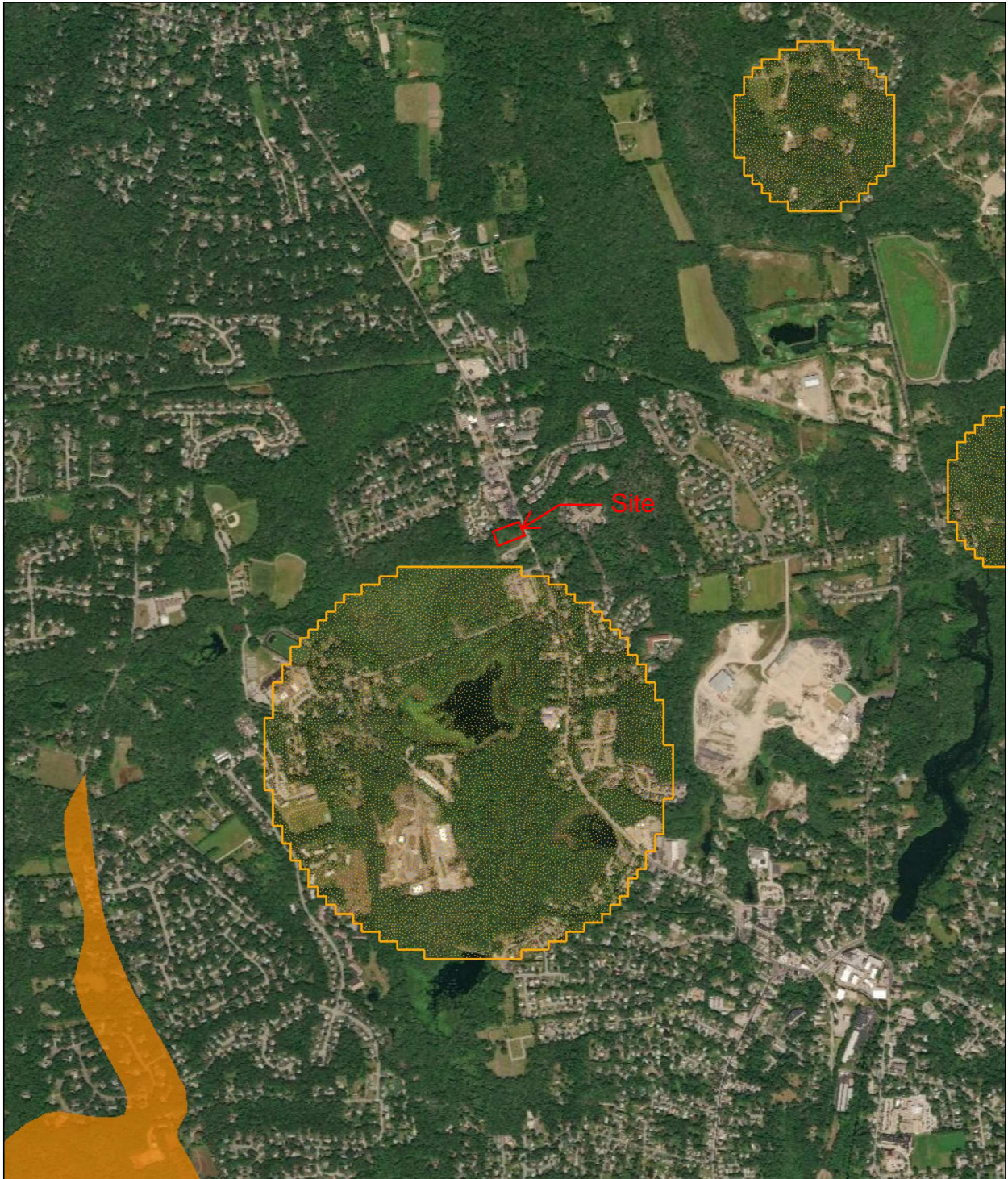


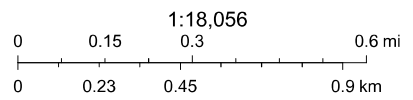


RIDEM Environmental Resource Map



2/11/2019 1:56:09 PM

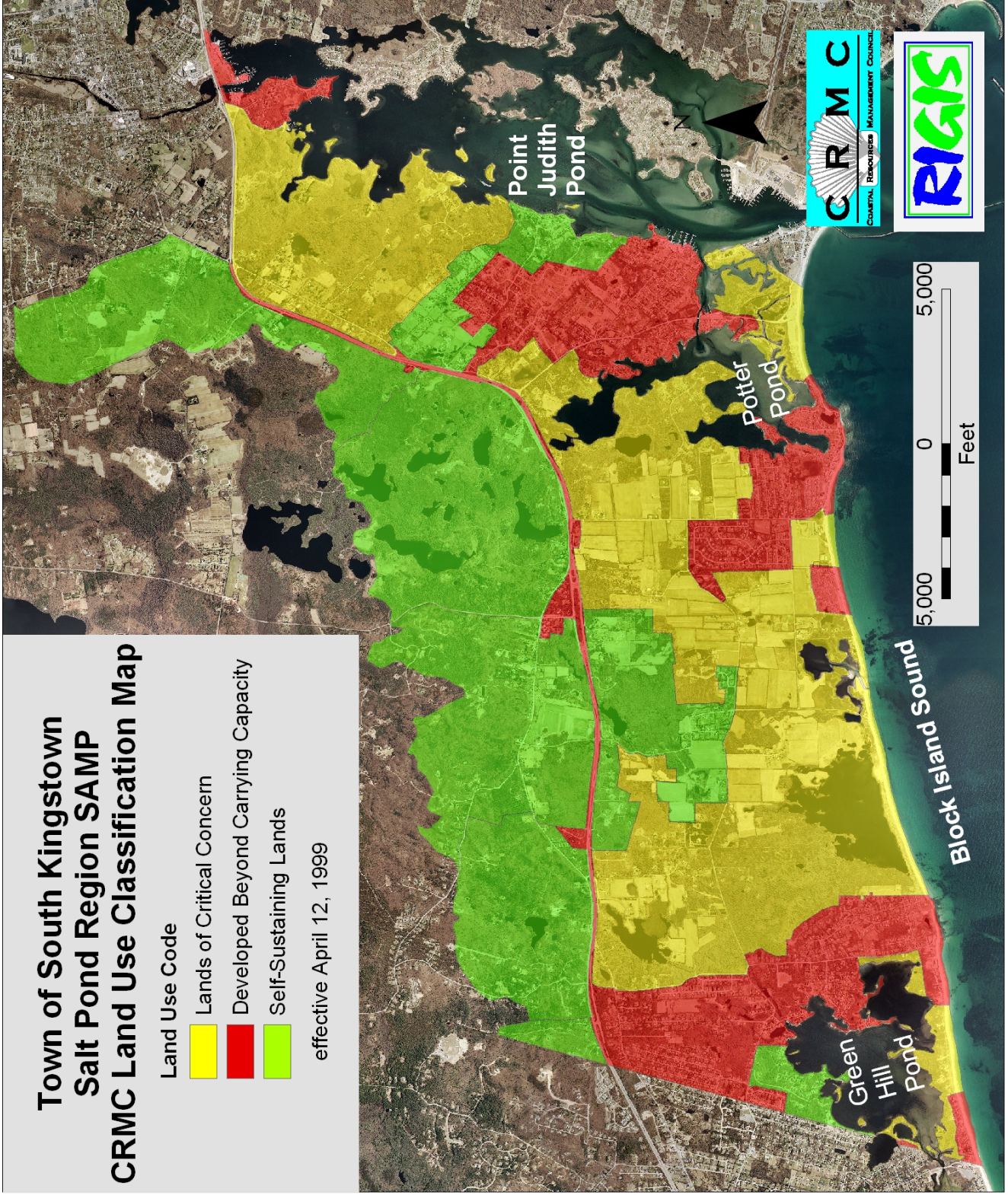
-  NaturalHeritageArea
-  OWTS Critical Resource Area



Town of South Kingstown Salt Pond Region SAMP CRMC Land Use Classification Map




- Land Use Code
- Lands of Critical Concern
 - Developed Beyond Carrying Capacity
 - Self-Sustaining Lands

effective April 12, 1999

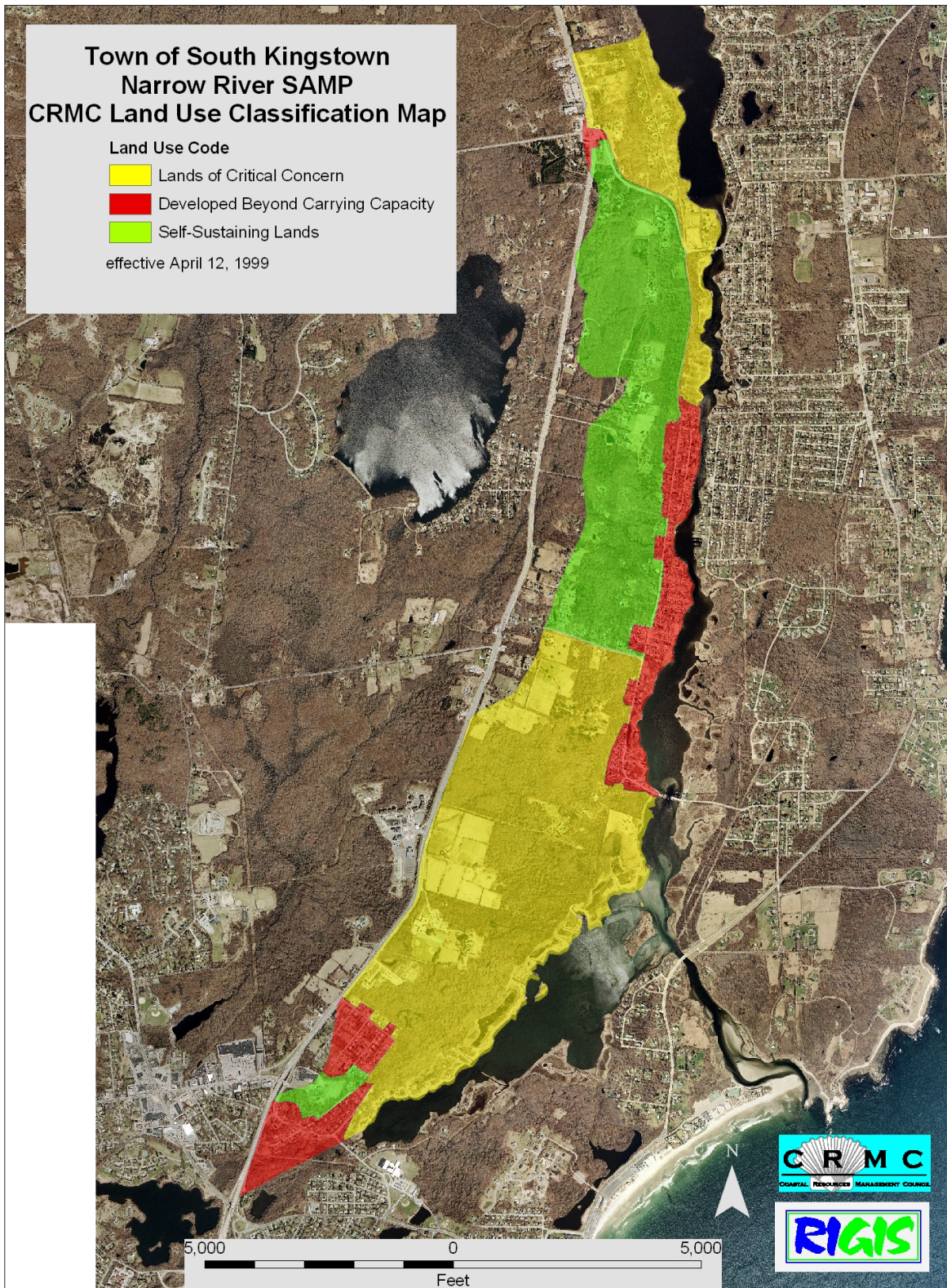


Town of South Kingstown Narrow River SAMP CRMC Land Use Classification Map

Land Use Code

-  Lands of Critical Concern
-  Developed Beyond Carrying Capacity
-  Self-Sustaining Lands

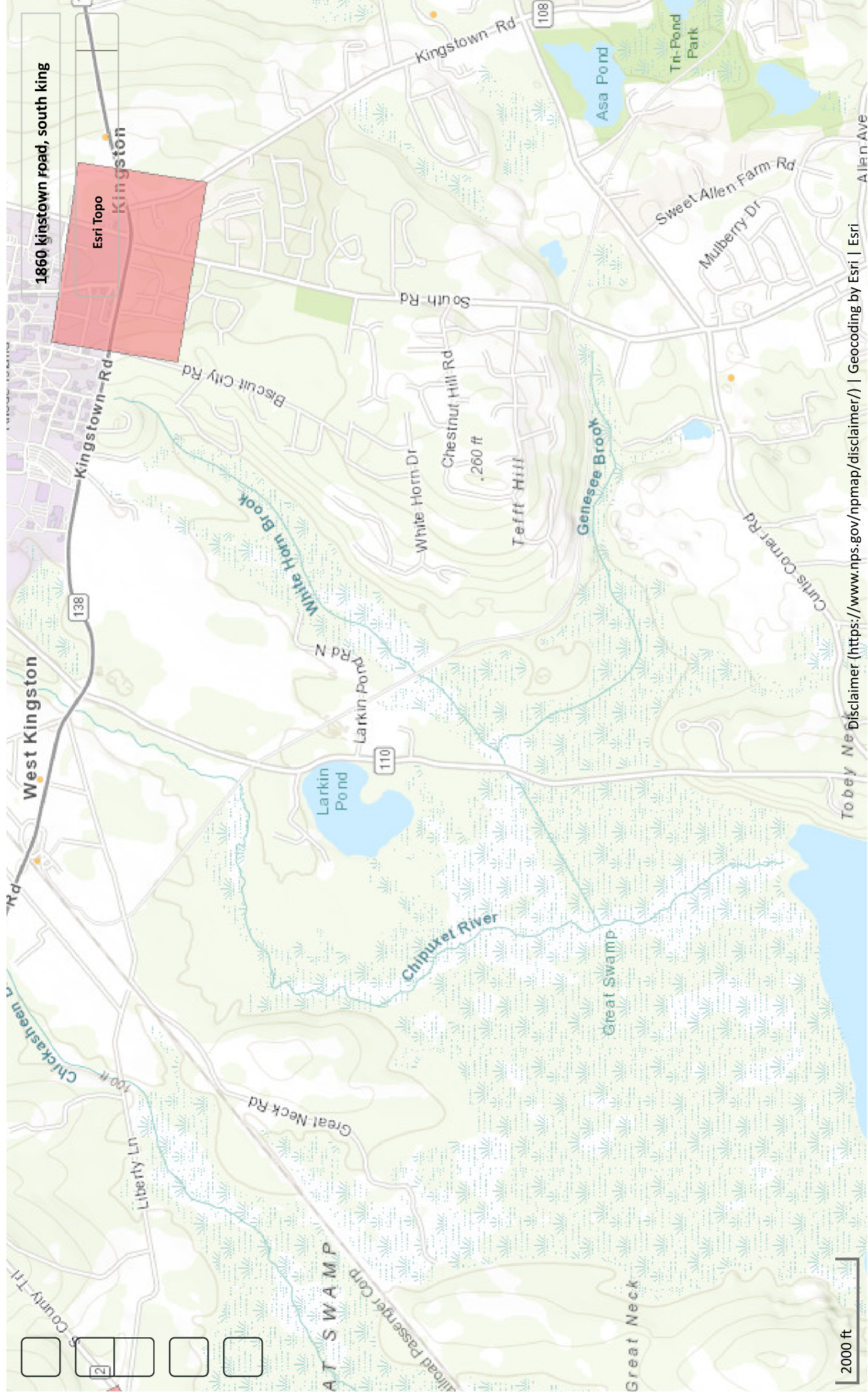
effective April 12, 1999



National Register of Historic Places

National Park Service
U.S. Department of the Interior

Public, non-restricted data depicting National Register spatial data processed by the Cultural Resources GIS facility. ...





STATE OF RHODE ISLAND
DEPARTMENT OF ENVIRONMENTAL MANAGEMENT
Office of Water Resources
235 Promenade Street, Providence, RI 02908

Select Pages

FINAL

Pathogen TMDL
for
Saugatucket River, Mitchell Brook, Rocky Brook
and
Indian Run Brook

May 16, 2003

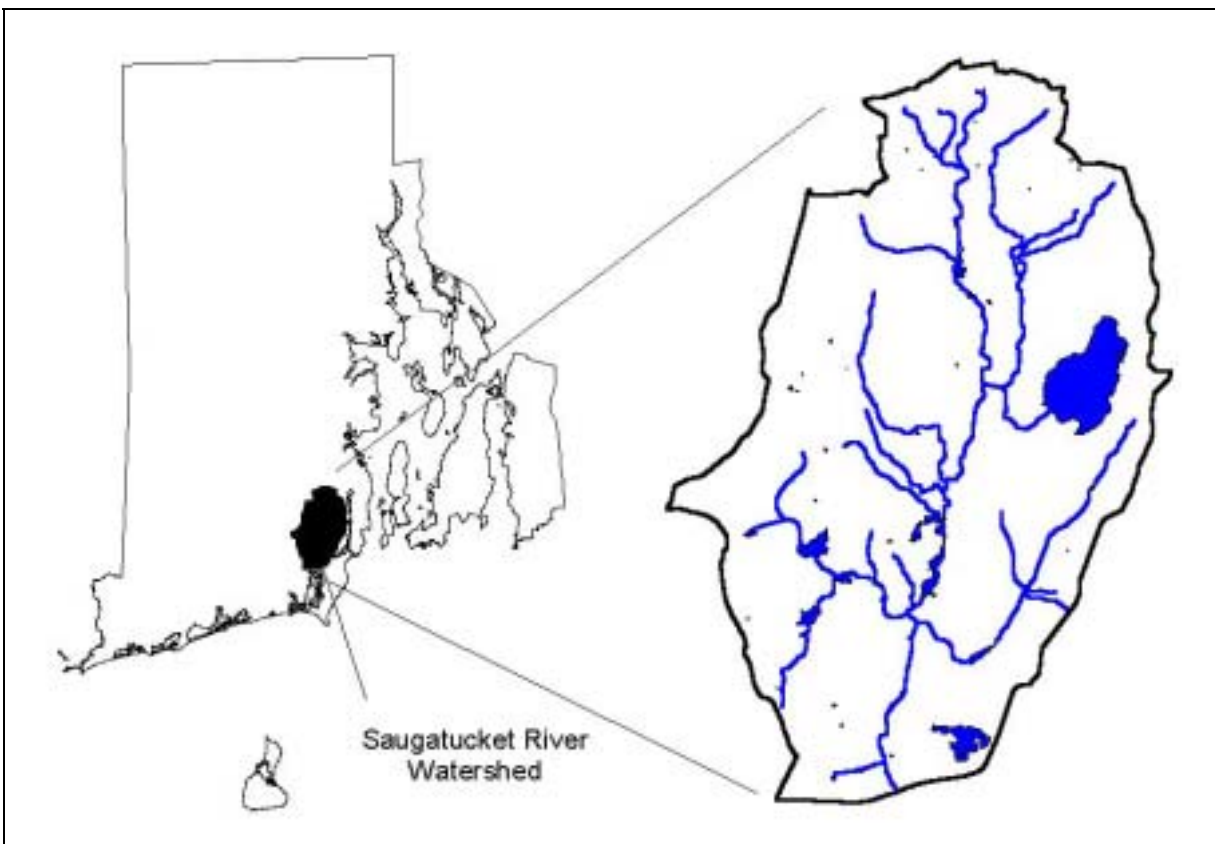
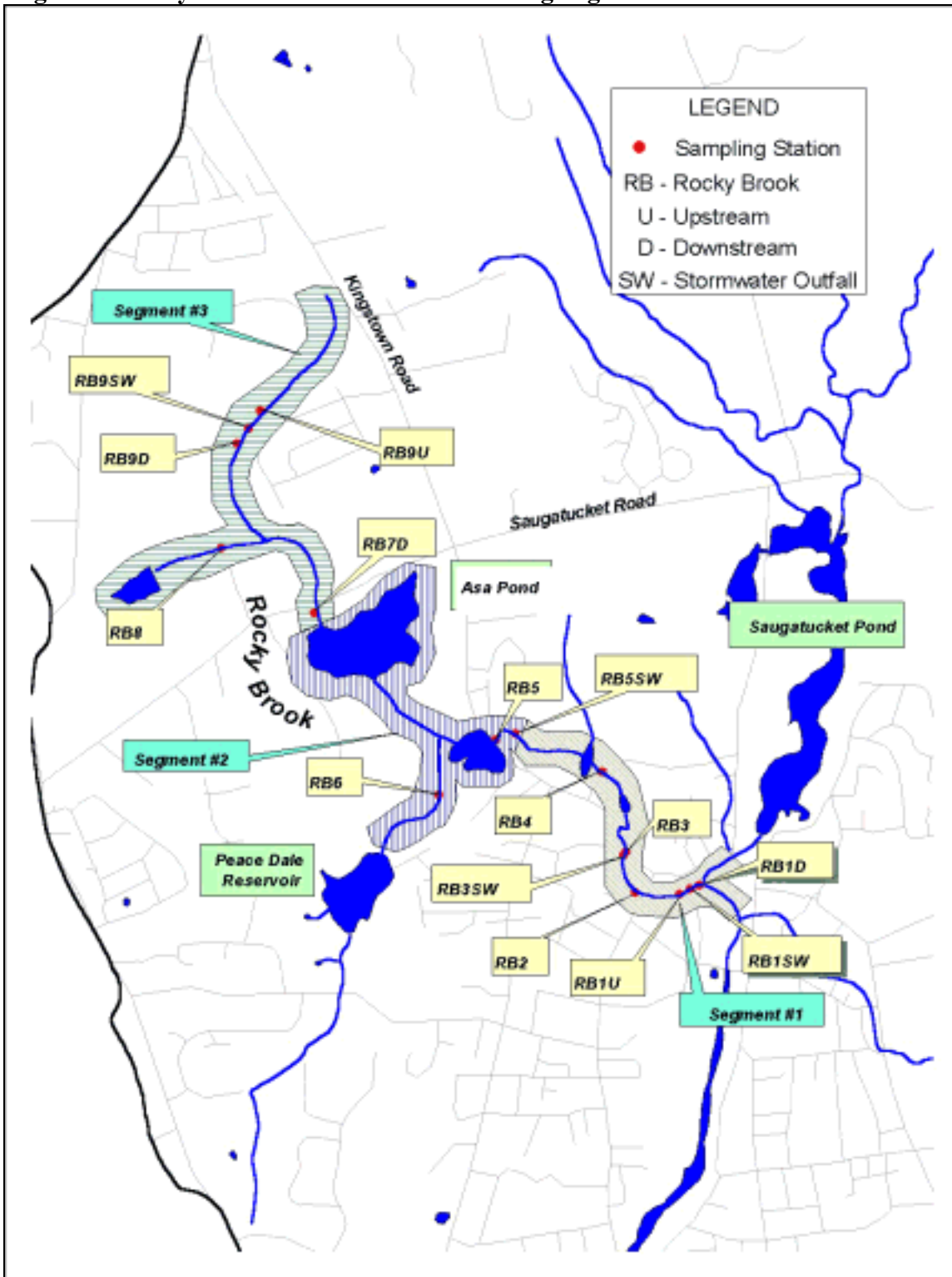


Figure 4. Rocky Brook and RIDEM Monitoring Segments and Stations



8.0 IMPLEMENTATION

This TMDL addresses water quality impairments due to bacteria contamination in the Saugatucket River and its tributaries. To simplify the water quality characterization, the Saugatucket River and its tributaries were divided into segments (Figures 2-5). Segment delineations were chosen to group similar land uses and/or sources. Water quality data were assessed, load allocations set, and BMPs recommended for each of the segments.

This TMDL relies upon phased implementation to reach its water quality goals. Upon implementation of the TMDL's recommended measures, RIDEM will conduct water quality monitoring to determine the effectiveness of these actions in meeting water quality goals.

In almost every stream segment of Saugatucket River, untreated stormwater runoff from roads, streets, and residential/commercial land uses impacts water quality. The effective management of stormwater in these existing developed areas will require a watershed-wide approach which combines pollution prevention activities with structural best management practices to reduce the discharge of pollutants and runoff volumes. The stormwater management plans required by the RIPDES Phase II Stormwater permit should set forth the specific actions and schedule for accomplishing the TMDL's goals. It is imperative that RIDEM, RIDOT, and the Town of South Kingstown work cooperatively towards achieving these goals.

In addition to the recommendations outlined below, other areas of concern were noted within the watershed. The streambank is eroded in Indian Run Brook from a seven-foot by three-foot stormwater outfall (RIDEM station IR3SW) to where the stream flows under Church Street. The outfall is located at the intersection of Route 108, School Street, and Indian Run Road and drains the Dale Carlia Corner area. The streambank of Indian Run Brook is also eroded from Spring Street to Columbia Street. High, flashy stormwater flows discharging from station IR3SW, coupled with mowing practices up to the water's edge in both segments have led to extensive erosion. It is recommended that streambank stabilization BMPs be implemented to stabilize these two segments of Indian Run Brook. Both areas are located on Town of South Kingstown Property. Also, as development and redevelopment of commercial properties occurs within the watershed, it is recommended that the Town of South Kingstown require stormwater attenuation that promotes on-site detention and/or infiltration of runoff. This recommendation especially applies to commercial properties in the catchment area which includes Dale Carlia Corner and Old Tower Hill Road that contribute stormwater runoff to the box culvert at the intersection of Route 108, School Street, and Indian Run Road.

8.1 Rocky Brook

8.1.1 Segment 3 (Headwaters to Curtis Corner Road)

Required Reduction

Based on the weighted average geometric mean, a reduction of 94% is required in this segment.

Proposed BMPs

A combination of structural and non-structural control measures are recommended for this reach. Non-structural control measures include more frequent street cleaning, stormdrain maintenance,

a pet-waste ordinance, and ISDS maintenance. Additionally, this TMDL calls for the Town of South Kingstown, RIDOT, and responsible property owners to reduce wet weather fecal coliform loads to the maximum extent technically feasible through the use of structural BMPs that promote the detention and/or infiltration of runoff from roadways and commercial properties within the catchment area and/or at the outfall located off Greenwood Drive. More specifically, there appears to be adequate space within the storm sewer right-of-way off Greenwood Drive (Station RB9) to construct an infiltration basin to detain and/or reduce the volume of water that reaches the stream.

8.1.2 Segment 2 (Curtis Corner Road to Rocky Brook Reservoir Outlet)

Required Reduction

Based on the percent exceedance portion of the standard, an 11% reduction is required in this segment.

Proposed BMPs

Non-structural control measures are recommended for this segment. Non-structural control measures include more frequent street cleaning, stormdrain maintenance, and a pet-waste ordinance. ISDS maintenance is not included in the recommendations for this segment since the area is sewerred.

8.1.3 Segment 1 (Rocky Brook Reservoir outlet to Rocky Brook mouth at Railroad St.)

Required Reduction

Based on the geometric mean, an 87% reduction in fecal coliform concentrations is required in this segment.

Proposed BMPs

A combination of structural and non-structural control measures are recommended for this segment. Non-structural control measures include more frequent street cleaning, stormdrain maintenance, and a pet-waste ordinance. ISDS maintenance is not recommended since this segment of the watershed is sewerred. Additionally, this TMDL calls for the Town of South Kingstown, RIDOT and responsible property owners to reduce wet weather fecal coliform loads to the maximum extent technically feasible through the use of structural BMPS that promote the detention and/or infiltration of runoff from roadways and commercial or industrial properties within the catchment areas and/or the outfalls at the following locations: the Kingstown Road stormwater swale below Rocky Brook Reservoir (Station RB5U), Kingstown Road at Anton's Deli, and Railroad Street.

8.2 Indian Run Brook

8.2.1 Segment 2 (Headwaters to Indian Run Brook Reservoir outlet)

Required Reduction

Based on the weighted average geometric mean, a 94% reduction in fecal coliform concentration is required for this segment.