

From: [Dennis Bernier](#)
To: [Sam Hemenway](#)
Subject: Re: SK High School - Site Plan
Date: Thursday, April 17, 2025 11:23:39 AM

Good Moring, Sam.

Thank you for sending the Plan.
After reviewing it the location of the Yard Hydrant is correct .
That will be the only one that is need for this project as there are two more within the required distance.

Dennis Bernier
Fire Marshal
Union Fire District
131 Asa Pond Rd
Wakefield, RI 02879
Phone (401)789-8354
Cell (401)489-9915
Fax (401)789-8750
DBernier@unionfiredistrict.com
www.unionfiredistrict.com

From: Sam Hemenway <shemenway@garofaloassociates.com>
Sent: Thursday, April 17, 2025 10:48 AM
To: Dennis Bernier <DBernier@unionfiredistrict.com>
Subject: SK High School - Site Plan

Mr. Bernier,
Thanks for taking the time to discuss the project with me.
Attached find the current site plan annotated with the FD elements. Please take a look and let me know if you see any shortcomings, or would like us to look at other alternatives.
Thanks,
Sam

Samuel S. Hemenway, PE
Project Manager

Garofalo & Associates, Inc.

85 Corliss Street, PO 6145
Providence, RI 02940
(o) 401.273-6000 x-293

04.17.25
FIRE
DISCUSSION

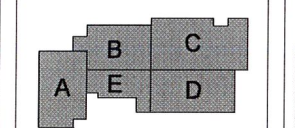
ZONING SUMMARY		
A.P. 49-4, LOT 14 & A.P. 57-1, LOT 209		
ZONE: GI (GOVERNMENT & INSTITUTION) - ED. INSTITUTION		
DESCRIPTION	REQUIRED	PROPOSED
LAND USE: EDUCATIONAL	-	ALLOWED
MIN. LAND AREA (1)	200,000 S.F. (4.5 AC.)	±15.60 AC
MIN. LOT FRONTAGE	200'	1,717.52'
MIN. FRONT YARD BUILDING SETBACK	40'	±43.3'
MIN. CORNER SIDE YARD BUILDING SETBACK	40'	±83.3'
MIN. SIDE YARD BUILDING SETBACK	40'	±98.3'
MIN. REAR YARD BUILDING SETBACK	40'	±98.0'
MAX. LOT COVERAGE	20%	15.1% ±

PARKING SUMMARY		
HIGH SCHOOL BUILDING	200 SPACES (3.1)	298 SPACES
SPECIAL EDUCATION BUILDING	25 SPACES (3.2)	59 SPACES
TOTAL PARKING:	225 SPACES	356 SPACES

- TABLE NOTES:**
- INFO PROVIDED IN THIS TABLE IS BASED UPON PART III, APPENDIX A, ARTICLE 4, SECTION 401 OF THE SOUTH KINGSTOWN ZONING ORDINANCE - MUNICIPAL USES ARE EXEMPTED UNDER SECTION 401 AND 501 BUT PROVISIONS RELATED TO EDUCATIONS SHALL APPLY.
 - MINIMUM LOT AREA FOR EDUCATIONAL INSTITUTIONS 200,000 S.F. + 40,000 S.F. PER 100 PUPILS.
 - PARKING REQUIREMENTS PER SEC.711.D:
 - HIGH SCHOOL: 1 SPACE REQUIRED FOR EVERY 10 STUDENTS OR 1 SPACE FOR EVERY 5 SEATS IN AUDITORIUMS OR ASSEMBLY HALLS - DESIGN ASSUMPTION 725 STUDENTS, ASSEMBLY UNDER 1000.
 - SPECIAL EDUCATION: 2 SPACES REQUIRED FOR EACH CLASSROOM PLUS 1 SPACE FOR EVERY 10 STUDENTS AND 1 SPACE FOR EVERY 5 SEATS IN AUDITORIUMS OR ASSEMBLY HALLS - DESIGN ASSUMPTION 30 STUDENTS, ASSEMBLY UNDER 200.
 - TOTAL EXISTING PARKING: 356 SPACES.
- SHEET NOTES:**
- SEE SHEET C-1 FOR GENERAL NOTES AND LEGEND.
 - SEE LANDSCAPE FOR FENCING DETAILS.



South Kingstown School District
South Kingstown High School
215 Columbia Street
South Kingstown, RI 02879

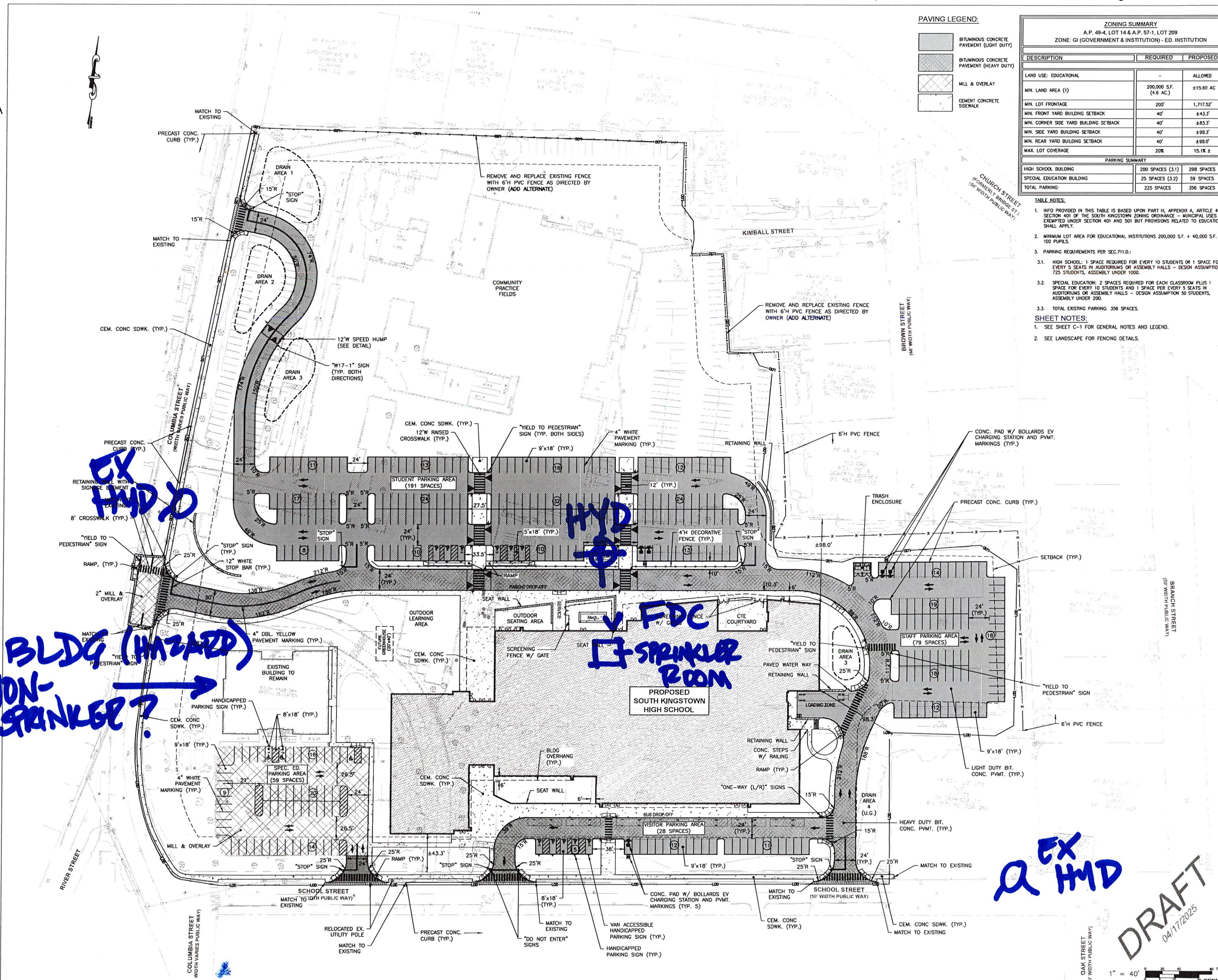
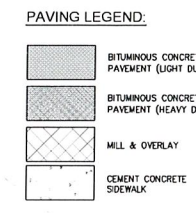


KEYPLAN

Number	Date	Issued For

PROGRESS PRINT
NOT FOR
CONSTRUCTION

Date: 1/ / 2025	Drawing Number: C-4
Scale: As indicated	Proj. Number: 7458.00



EX HMD

ER. BLDG (HAZARD) NON-SPRINKLER?

HYD

FDC SPRINKLER ROOM

EX HMD

DRAFT
04/17/2025

