

SYMBOL	BOTANICAL NAME	COMMON NAME	QTY	SIZE
<b>DECIDUOUS TREES</b>				
+	ACE RUB	ARMSTRONG GOLD® MAPLE	4	2" CAL.
+	AME GRA	SERVICEBERRY	3	10 1/2" B&B CLUMP
+	LIQ STY	SLENDER SILHOUETTE SWEET GUM	4	2" CAL.
+	NYS SYL	WILDFIRE TUPELO	1	33.5" CAL.
+	QUE WAR	KINDRED SPIRIT® COLUMNAR OAK	2	33.5" CAL.
<b>EVERGREENS</b>				
+	ILE GLA	GEM BOX INKBERRY	18	3 GAL. CONT.
+	JUN HET	GREEN COLUMNAR JUNIPER	18	6 7/8" B&B
+	THU OCC	AMERICAN ABORVITAE	10	7 7/8" B&B
<b>SHRUBS</b>				
+	HYD PAN	BOBO® HARDY HYDRANGEA	8	5 GAL. CONT.
+	ILE VER	WINTERBERRY	18	3 1/4" B&B
+	ITE VIR	LITTLE HENRY® DWARF VIRGINIA SWEETSPICE	79	3 GAL. CONT.
+	VIB DEN	ARROWWOOD VIBURNUM	18	3 1/4" B&B
<b>PERENNIALS + GRASSES</b>				
+	LIR MUS	MONROE'S WHITE LILY TURF	45	1 GAL. CONT.
+	PEN HAM	HAMELN FOUNTAIN GRASS	92	1 GAL. CONT.
+	SES AUT	AUTUMN MOOR GRASS	60	1 GAL. CONT.
<b>WET SWALE</b>				
+	FES ARU	TALL FESCUE	2317 SF	(PER RHODE ISLAND STORMWATER DESIGN AND INSTALLATION STANDARDS MANUAL)
<b>PROPOSED LAWN AREAS</b>				
+		BLACK BEAUTY SOD OR HYDRO SEED	2169 SF	
11 EXISTING TREES				
7 TO REMAIN				
4 TO BE REMOVED				

**LANDSCAPING - GENERAL STANDARDS AND SPECIFICATIONS**

**I. PLANT MATERIALS - STANDARDS**  
 PLANT MATERIALS SHALL CONFORM TO THE REQUIREMENTS DESCRIBED IN THE LATEST EDITION OF AMERICAN STANDARD FOR NURSERY STOCK, PUBLISHED BY THE AMERICAN ASSOCIATION OF NURSERYMEN. PLANT MATERIALS SHALL BE SELECTED FROM THE PUBLICATION ENTITLED SUSTAINABLE TREES AND SHRUBS FOR SOUTHERN NEW ENGLAND, UNIVERSITY OF RHODE ISLAND AND UNIVERSITY OF MASSACHUSETTS COOPERATIVE EXTENSION SYSTEMS, 2ND EDITION, 1995, OR LATEST AMENDMENT. AT TIME OF PLANTING, PLANTS SHALL CONFORM TO THE MEASUREMENTS SPECIFIED BELOW:  
 a) STREET TREES AND SHADE TREES SHALL MEET THE REQUIREMENTS OF ARTICLE XIII, SECTION 13 OF THESE REGULATIONS.  
 b) MINIMUM SIZE FOR SMALL EVERGREEN TREES OR LARGE SHRUBS SHALL BE SIX TO EIGHT (6-8) FEET IN HEIGHT.  
 c) MINIMUM SIZE FOR LOW SHRUBS SHALL BE FOUR (4) FEET IN HEIGHT.  
 d) SPACING OF SHRUBS AND OTHER PLANT MATERIALS WHICH ARE INTENDED TO PROVIDE A VISUAL AND/OR AUDIO SCREEN SHALL BE DETERMINED BY THE ANTICIPATED HEIGHT AND SPREAD OF THE PLANT AT MATURITY, BUT SHALL BE PLANTED IN STAGGERED ROWS SO AS TO ACHIEVE A DENSE APPEARANCE WITHIN ONE YEAR OF PLANTING.  
 IN ADDITION TO PLANT MATERIALS, THE PLANNING BOARD MAY REQUIRE THE PLACEMENT OF A SIX-FOOT-HIGH OPAQUE FENCE OR OTHER BARRIER IF THE BOARD DETERMINES THAT THE INITIAL PLANTING WILL NOT ACHIEVE THE INTENDED SCREENING EFFECT WITHIN ONE YEAR OF PLANTING.  
 e) ALL PLANTINGS SHALL BE MAINTAINED AND GUARANTEED A PERIOD OF ONE YEAR.

**2. STREET LANDSCAPING**  
 WHENEVER A PARKING OR LOADING AREA ADJOINS A PUBLIC STREET RIGHT-OF-WAY, OR THE RIGHT-OF-WAY OF A PRIVATE STREET WHICH IS OR MAY BE CUSTOMARILY USED BY THE PUBLIC AS ACCESS TO THE PARKING OR LOADING FACILITY, A LANDSCAPED STRIP OF LAND SHALL BE CONSTRUCTED OR MAINTAINED ALONG THE ENTIRE STREET FRONTAGE, EXCEPT FOR ANY NECESSARY DRIVEWAYS, AS PROVIDED HEREIN.  
 THERE ARE FIVE (5) BASIC OPTIONS FOR A LANDSCAPED STRIP ALONG A STREET AS SHOWN IN THE ILLUSTRATIONS ON THE FOLLOWING PAGES. FOR THE PURPOSE OF THESE REGULATIONS, THE DESIGN AND LAYOUT OF SITE FEATURES SHOWN ARE INTENDED TO BE ILLUSTRATIVE DESIGN GUIDELINES. THE PLANNING BOARD MAY MODIFY THE SPECIFIC DESIGN DURING DEVELOPMENT PLAN REVIEW WHERE NECESSARY TO ACHIEVE THE PURPOSES AND GOALS OF THIS SECTION.

**1. A STRIP OF LAND OF MINIMUM 10 FOOT WIDTH BETWEEN THE RIGHT-OF-WAY AND THE PARKING AND LOADING FACILITY PLANTED AS A PARTIAL LANDSCAPE SCREEN.**  
**2. PERIMETER LANDSCAPING - PARKING LOTS AND LOADING FACILITIES**  
 THE PERIMETER OF THE PARKING LOT AND LOADING FACILITY SHALL BE SURROUNDED BY A LANDSCAPED STRIP.  
 THE WIDTH OF THE PERIMETER LANDSCAPING STRIP SHALL BE AS FOLLOWS:  
 NO LESS THAN TEN (10) FEET IN WIDTH WHERE THE PARKING AREA CONTAINS FIVE (5) SPACES OR MORE OR WHICH EXCEEDS 2500 SQ. FT. OF PAVED AREA; AND, NO LESS THAN FIVE (5) FEET IN WIDTH WHERE THE PARKING AREA CONTAINS LESS THAN FIVE (5) SPACES OR WHICH HAS LESS THAN 2,500 SQ. FT. OF PAVED PARKING AREA.  
 LANDSCAPING OF THE PERIMETER OF A PARKING LOT SHALL INCLUDE AT LEAST ONE TREE PLUS THREE (3) LOW SHRUBS OR GROUND COVER PLANTS FOR EVERY THIRTY-FIVE (35) LINEAR FEET OF PERIMETER.

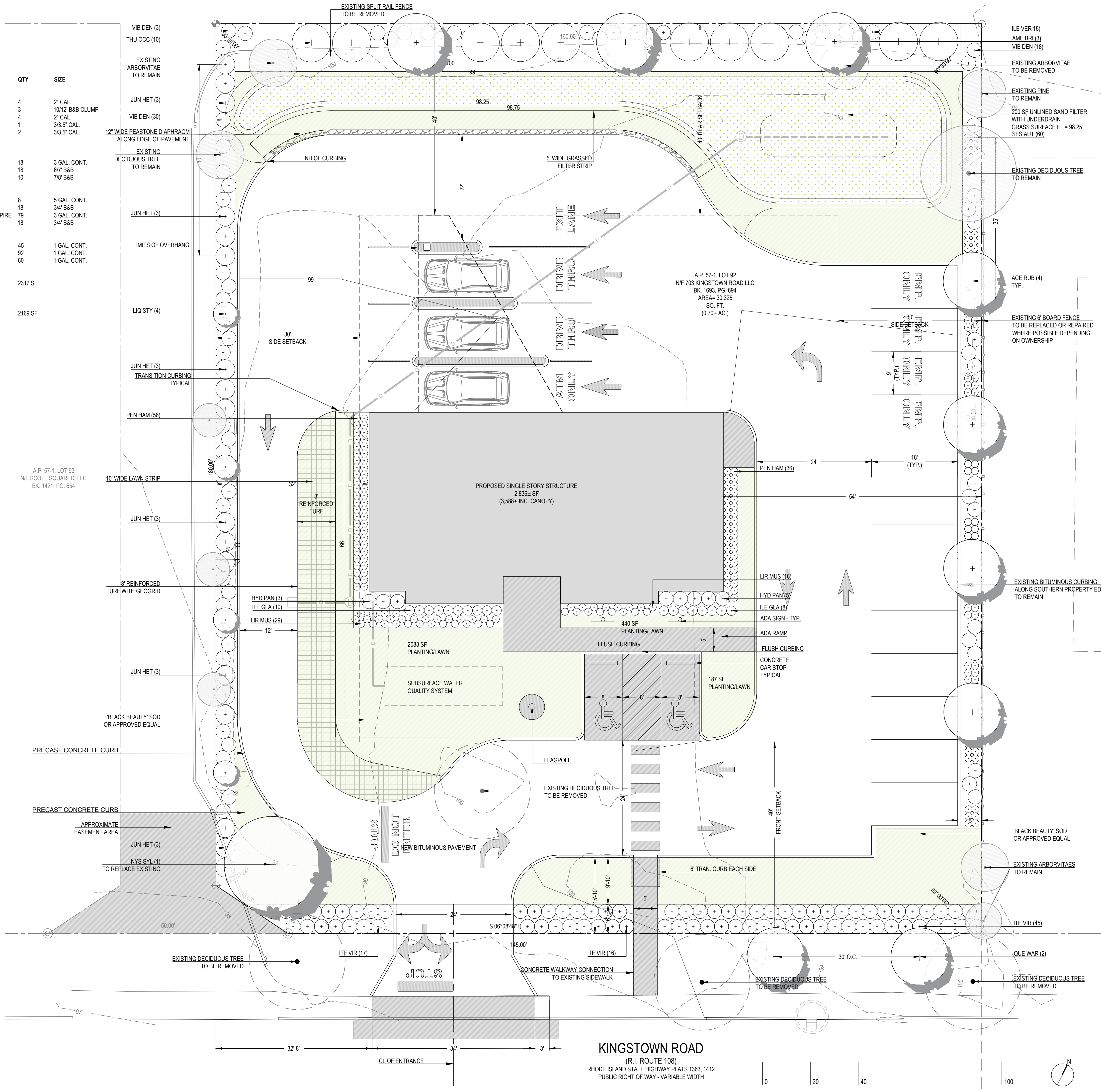
**3. INTERIOR LANDSCAPING**  
 THE INTERIOR AREAS OF PARKING LOTS (EXCLUSIVE OF LOADING AREAS) SHALL ALSO BE LANDSCAPED. THE MINIMUM AMOUNT OF INTERIOR PARKING LOT LANDSCAPING SHALL BE PROVIDED IN ACCORDANCE WITH THE FOLLOWING TABLE:  
 TOTAL AREA OF PARKING LOT 2,500 TO 20,000 SQ. FT. THEN THE MINIMUM PERCENT OF TOTAL PARKING LOT AREA THAT MUST BE IN INTERIOR LANDSCAPING AREA = 5%  
**PARKING LOT AREA = 18220 SF**  
**PROPOSED INTERIOR PLANTING AND LAWN = 2710 SF (14.8%)**  
**REQUIRED INTERIOR PLANTING AND LAWN = 911 SF**

1) COMMON LANDSCAPED AREAS USED TO DIRECT VEHICULAR OR PEDESTRIAN TRAFFIC, TO DELINEATE PARKING OR TO PRESERVE EXISTING NATURAL FEATURES: AT LEAST 1 TREE PER 300 SQ. FT. AREA PLUS AL LEAST 6 LOW SHRUBS OR GROUND COVER PLANTS AND/OR TURF GRASS.

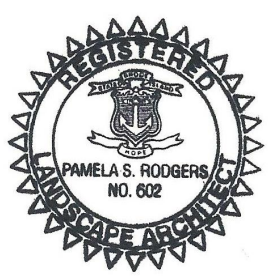
LOW SHRUBS OR TURF MAY BE SUBSTITUTED FOR TREES WITHIN THE INTERIOR OF PARKING AREAS WHERE EXISTING TREE COVER IS PRESENT OR IS BEING PROVIDED AS PART OF REQUIRED PERIMETER OR STREET RIGHT-OF-WAY LANDSCAPING OR IS ADJACENT TO THE PARKING AREA AND IS OF SUFFICIENT HEIGHT AND DENSITY TO ACHIEVE THE GOALS AND PURPOSES OF THIS SECTION.

INTERIOR LANDSCAPED AREAS SHALL BE DISTRIBUTED THROUGHOUT THE PARKING LOT AS MUCH AS POSSIBLE IN ORDER TO AVOID LARGE EXPANSES OF PAVEMENT, OR AS DETERMINED BY THE PLANNING BOARD AT THE TIME OF DEVELOPMENT PLAN REVIEW.

LANDSCAPED STRIPS ALONG THE STREET OR PERIMETER LANDSCAPING SHALL NOT BE COUNTED TO MEET THESE INTERIOR LANDSCAPING REQUIREMENTS.



**PEOPLE'S CREDIT UNION**  
 703 KINGSTOWN ROAD  
 SOUTH KINGSTOWN, RI



PROJECT NUMBER: 24.160  
 DRAWN BY: PSR  
 CHECKED BY: PSR  
 SCALE: 1" = 10'-0"  
 DATE: 12.02.2024

REVISIONS:		
△	11.12.2024	UPDATE SITE PLAN
△	12.02.2024	PLAN REVISIONS PER TRC

**LANDSCAPE PLAN**

**L1.0**