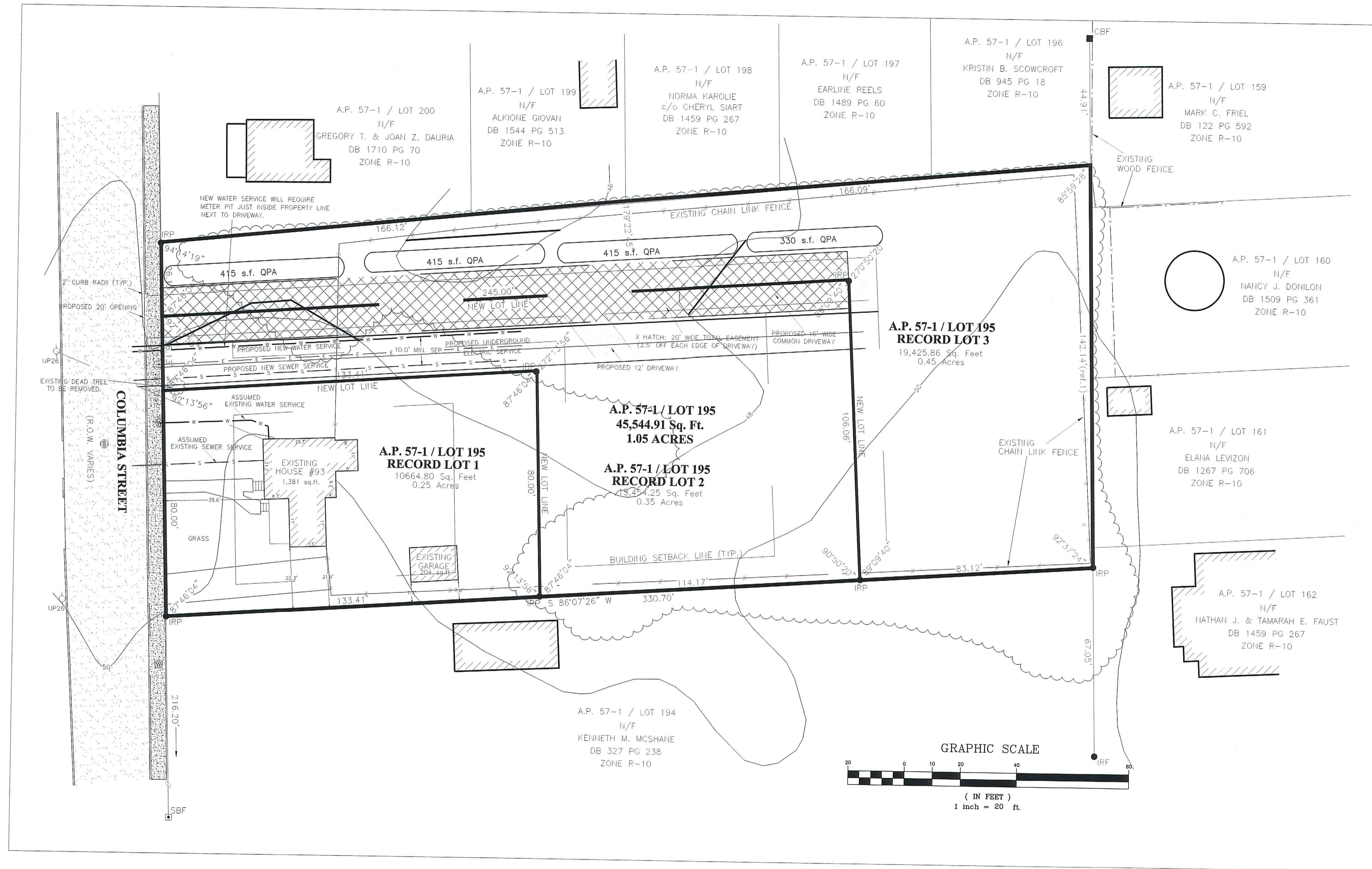


DEPICTED BOUNDARY INFORMATION AND TOPOGRAPHIC AND LOCATION SURVEY BY KIRK ANDREWS PLS

OPA NOTES:

- CONSTRUCTION VEHICLES SHALL AVOID DRIVING OVER OPA AREAS TO THE MAXIMUM EXTENT POSSIBLE. IF OPA SOILS ARE COMPACTED, THEN THE SOIL MUST BE SUITABLE AMENDED, TILLED, AND RE-VEGETATED ONCE CONSTRUCTION IS COMPLETE TO RESTORE INFILTRATION CAPACITY. THE SLOPE OF THE OPA MUST BE LESS THAN OR EQUAL TO 5.0%.
- THE OPA MUST BE INSPECTED YEARLY TO ENSURE NO BUILD-UP OF SEDIMENT. IF THERE IS ACCUMULATION OF SEDIMENT, THEN THE SEDIMENT SHALL BE REMOVED AND THE OPA SHALL BE RESTORED.



DRAINAGE PLAN
 ASSESSOR'S PLAT 57-1 LOT 195
 93 COLUMBIA STREET
 SOUTH KINGSTOWN, RHODE ISLAND
 PREPARED FOR: SCOT HALLBERG
 SCALE: AS NOTED DATE: 06/10/24 SHEET 1 OF 1

TITLE:

NO.	DATE	DESCRIPTION	BY

REVISIONS:



CARRIGAN ENGINEERING, INC.

CIVIL AND ENVIRONMENTAL ENGINEERING
 86 BROOK FARM ROAD SOUTH
 WAKEFIELD, RI 02879
 PHONE (401) 789-6865

JOB NO. 231212