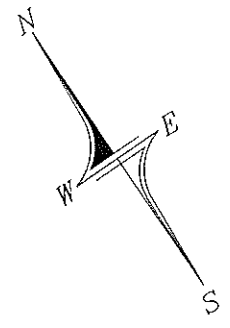


LOCATION MAP  
(Not To Scale)

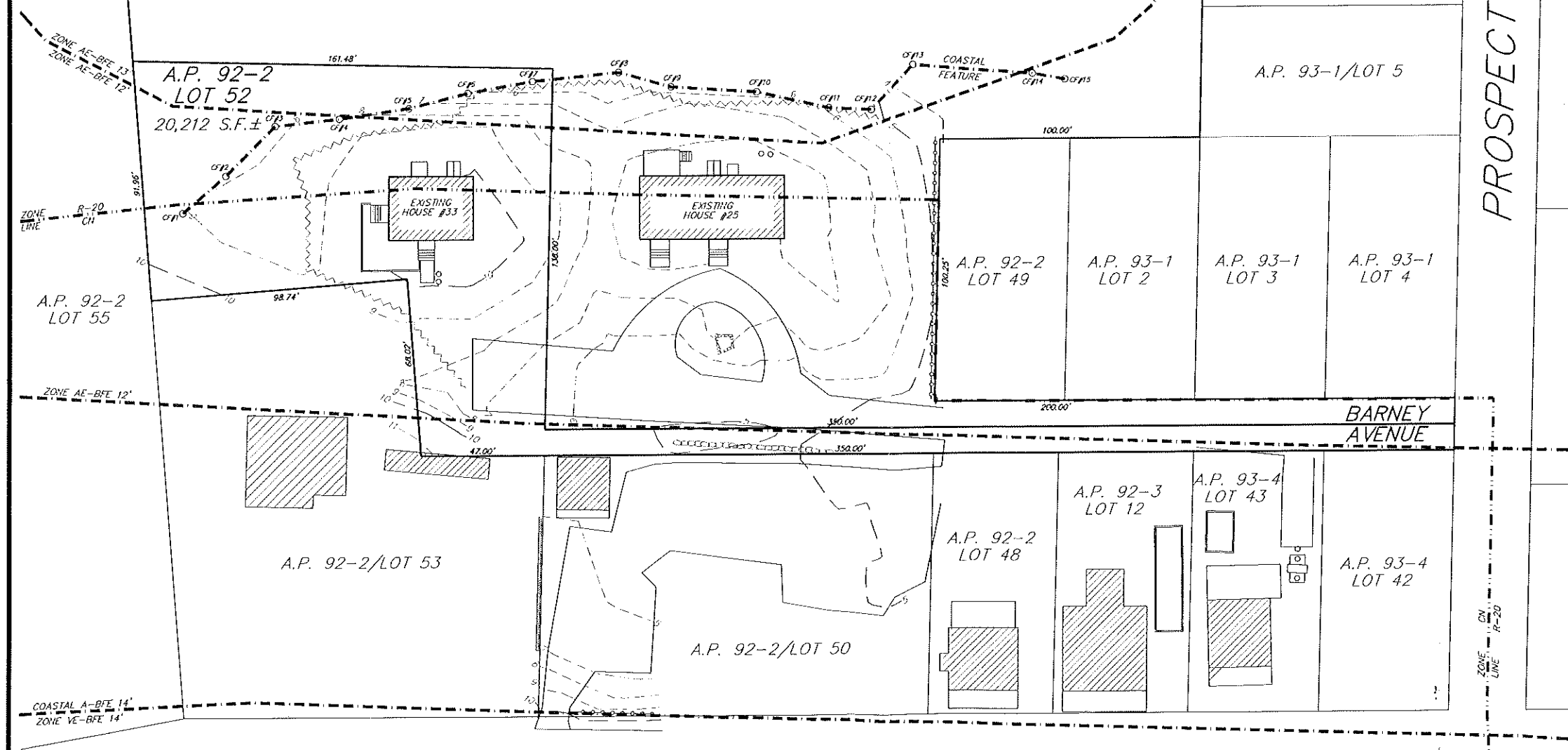


**NOTE:**  
COASTAL FEATURE FLAGS SET BY AMZINIS ENVIRONMENTAL SERVICES, INC ON 9/24/21

**ZONING DISTRICT -CN**  
MINIMUM YARD REQUIREMENTS:  
FRONT SETBACK . . . . . 20 FEET  
SIDE SETBACK . . . . . 10 FEET  
REAR SETBACK . . . . . 20 FEET

**ZONING DISTRICT -R-20**  
MINIMUM YARD REQUIREMENTS:  
FRONT SETBACK . . . . . 35 FEET  
SIDE SETBACK . . . . . 15 FEET  
REAR SETBACK . . . . . 35 FEET

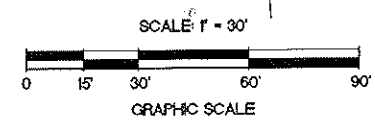
A.P. 93-1  
LOT 1  
6.76 ACRES±



PROSPECT ROAD

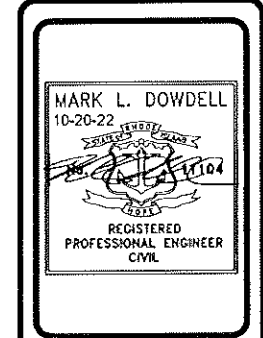
BARNEY AVENUE

MATUNUCK BEACH ROAD



SITE PLAN  
PREPARED FOR  
**TIDESTORM LLC**  
A.P. 92-2 LOT 52 & A.P. 93-1 LOT 1  
SITUATED IN THE TOWN OF  
SOUTH KINGSTOWN, RHODE ISLAND

NO.	REVISION	DATE
1.	DISTANCES	10/20/22



**DE DOWDELL ENGINEERING**  
DOWDELL ENGINEERING ASSOCIATES, LLC  
CIVIL & ENVIRONMENTAL ENGINEERS  
SURVEYORS & LAND PLANNERS  
806 W. 4th ST. SUITE 100  
SOUTH KINGSTOWN, RHODE ISLAND 02813  
(401) 584-1027

JOB NO. 3498	DRAWN BY: R.L.C.
DWG. NO. 3498-SITE	CHECKED: W.D.D.
SCALE: 1" = 30'	APPROVED: M.L.D.
	DATE: FEB. 22, 2022
SHEET: 1	
1 OF 1 SHEETS	