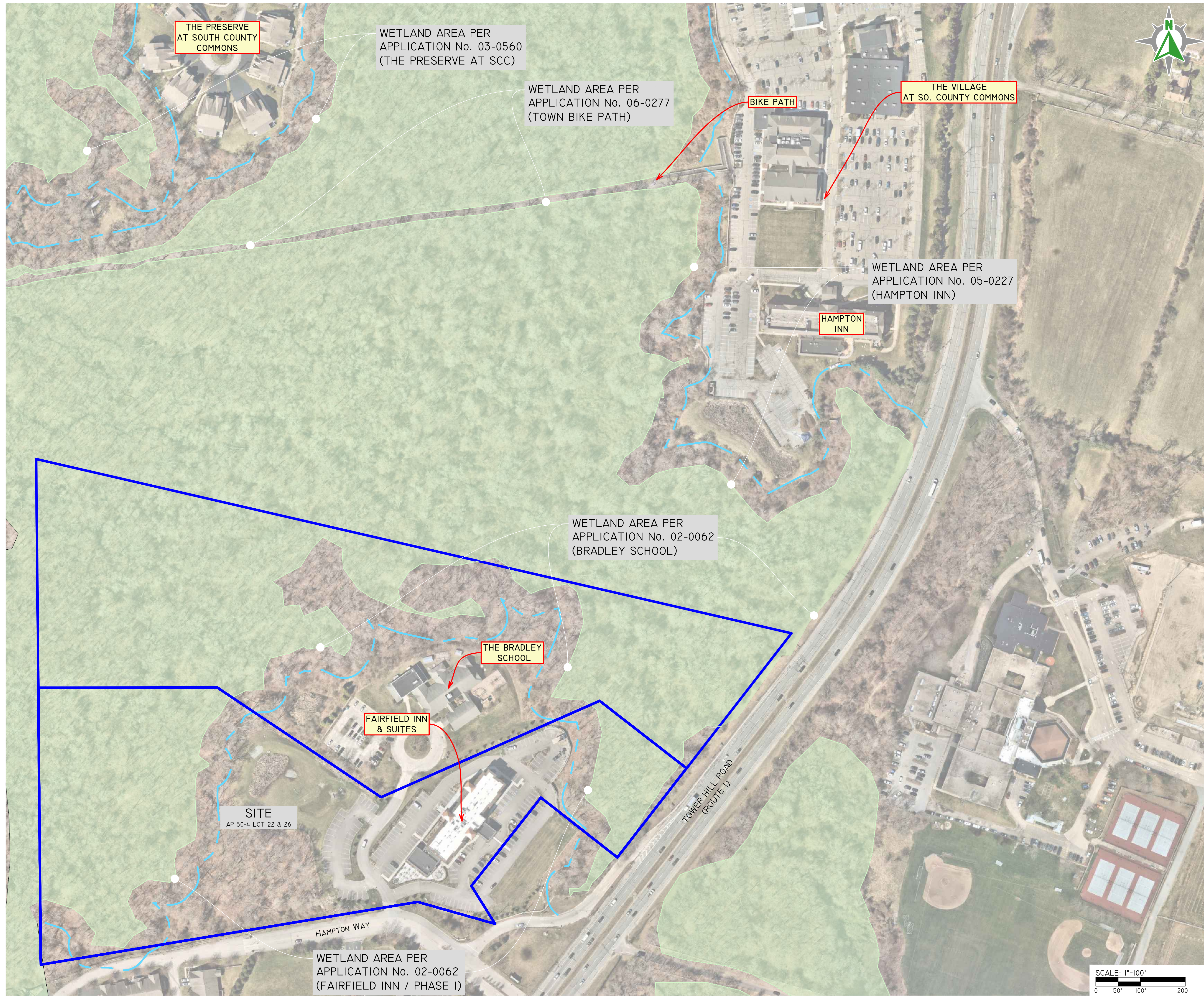


Z:\DEVELOPMENT\PROJECTS\0267-059 SOUTH COUNTY COMMONS\AUTOCAD DRAWINGS\0267-059W-EXH1-WETLANDS.DWG PLOT DATE: 12/12/2022



WETLAND EXHIBIT

SOUTH COUNTY COMMONS - DISTRICT 5
 ASSESSOR'S PLAT 50-4, LOTS 22 & 26
 SOUTH KINGSTOWN, RHODE ISLAND
 PREPARED FOR:
SUFFOLK REALTY, LLC
 50 SOUTH COUNTY COMMONS WAY, SUITE 64-R, SOUTH
 KINGSTOWN, RHODE ISLAND 02879 TEL 401-829-0680

DE JOB NO: 0267-059 COPYRIGHT 2022 BY DIPRETE ENGINEERING ASSOCIATES, INC.

THIS PLAN SET MUST NOT BE USED FOR CONSTRUCTION PURPOSES UNLESS STARTED ISSUED FOR CONSTRUCTION AND SIGNED BY THE PROFESSIONAL ENGINEER OF DIPRETE ENGINEERING.
 DIPRETE ENGINEERING ONLY WARRANTS PLANS ON A DIPRETE ENGINEERING PROJECT. DIPRETE ENGINEERING ASSOCIATES, INC. IS A PROFESSIONAL ENGINEERING FIRM. DIPRETE ENGINEERING DOES NOT WARRANT PLANS BY ANY OTHER PARTY.
 THE CONTRACTOR IS RESPONSIBLE FOR ALL OF THE MEANS AND METHODS OF CONSTRUCTION AND FOR OBTAINING ALL NECESSARY PERMITS AND APPROVALS.
 DIPRETE ENGINEERING ASSUMES NO RESPONSIBILITY FOR DAMAGES INCURRED DUE TO LOCATIONS OF EXISTING UTILITIES.

NO.	DATE	REVISIONS	DESIGNED BY	DRAWN BY
1	11/02/2022	WETLANDS EXHIBIT	I.V.P.	I.V.P.
				B.T.



Two Stafford Court Cranston, RI 02920
 tel 401-943-1000 fax 401-464-6006 www.diprete-eng.com

Boston • Providence • Newport