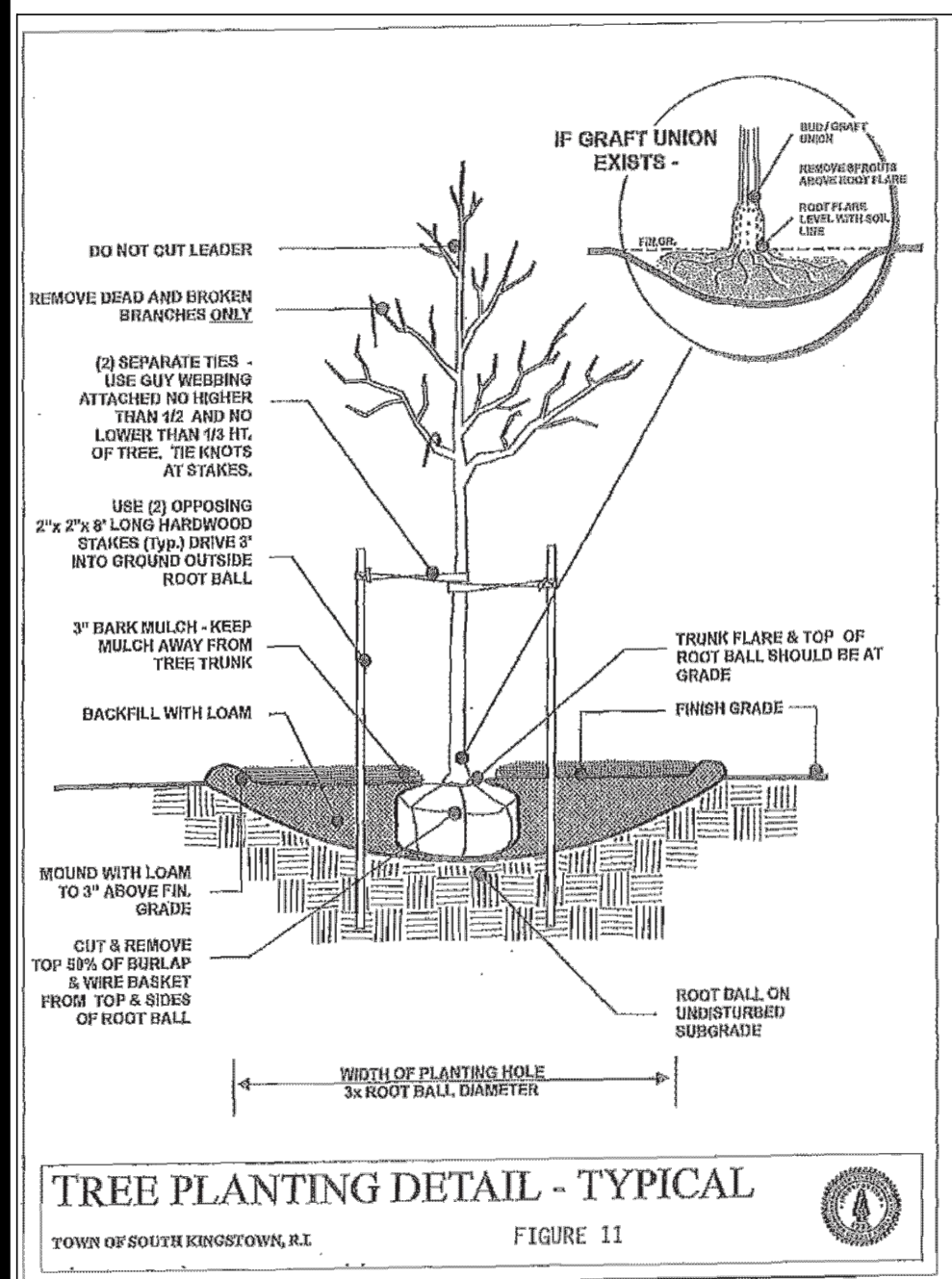


GENERAL NOTES

1. The top 50% of burlap and wire basket shall be removed.
2. Enough soil from the top of the root ball shall be removed to expose trunk/root flare.
3. Torn or ragged roots shall be pruned to make a clean termination.
4. Trees shall be planted in bowl-shaped hole three (3) times the width of the root ball.
5. The soil at the bottom of the hole shall be compacted to resist settling of the tree.
6. Soil that is nutrient deficient shall be amended by the addition of compost prior to backfilling the hole.
7. Trees shall be planted at a depth that allows full exposure of trunk/root flare.
8. Trees shall be staked and guyed, using arbor tape that is not pulled taut.
9. Soil from the planting hole shall be built up along the perimeter, to act as a dam to retain water.
10. Trees shall be mulched with 2 (two) to 3 (three) inches of mulch, keeping mulch 3 (three) inches away from trunk

MAINTENANCE & WARRANTY

1. THE CONTRACTOR SHALL WARRANTY ALL PLANTS FOR A PERIOD OF ONE YEAR AFTER THE DATE OF SUBSTANTIAL COMPLETION AGAINST DEFECTS INCLUDING DEATH AND UNSATISFACTORY GROWTH. ANY PLANT WHICH IS NOT HEALTHY SHALL BE REPLANTED BY THE CONTRACTOR.
2. AFTER PLANTING IS COMPLETED THE OWNER SHALL BE RESPONSIBLE TO PROVIDE ADEQUATE WATER AND ENSURE HEALTHY AND VIGOROUS GROWTH.



Halco
LIGHTING TECHNOLOGIES

LED Luminaires

ProLED Select Adjustable Wallpaper

- Field selectable CCT between 3000K, 4000K and 5000K
- Field adjustable lumens
- Integrated photocell with enable/disable switch
- Adjustable head-pivots up to 90 degrees
- Dark sky friendly when mounted at 0° setting
- Recessed optics for increased visual comfort

Specifications

Description
The Adjustable Wallpaper offers a modern full cut-off design that is a perfect solution for a broad range of outdoor lighting applications. The AWP is designed with ProLED Select technology, that allow users to select between the desired lumens and CCT for their application. The AWP pivoting head enables the installer to adjust between 0-90 degrees, putting light where you need it most. The AWP comes standard with an integrated photocell and enable/disable switch, providing dusk-to-dawn controls for even greater energy savings. With ProLED Select Technology, adjustable head and built-in photocell, the AWP is one of the most versatile wallpacks in the market.

Performance

- 15W, 30W, 50W, 80W and 120W base wattage options
- CCT selectable between 3000K-4000K-5000K
- Wattage selectable on 30W-120W models
- High Efficacy up to 155 LPW
- L70 lumen maintenance - 100,000 Hours @ 25°C
- 5 year limited warranty
- 0-10V dimming
- 120-277VAC input

Construction

- Construction
- Rugged and modern die-cast housing
- High durability textured bronze powder coat
- Hinged door for easy access and installation.
- Multiple conduit entry points
- Poly-carbonate lens
- 0-90 degree adjustable head

Controls

- 0-10 VDC dimming standard
- RF IS-1 level occupancy sensing

Certifications

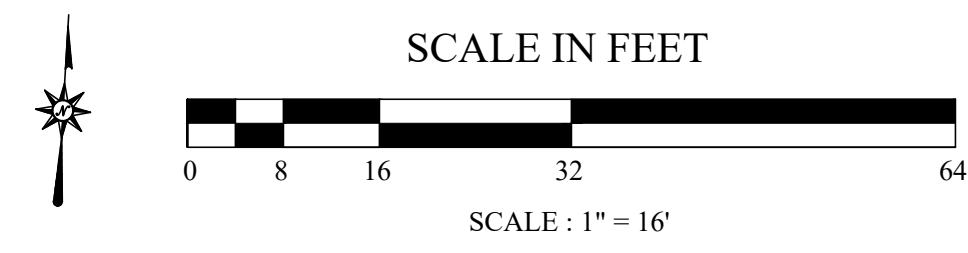
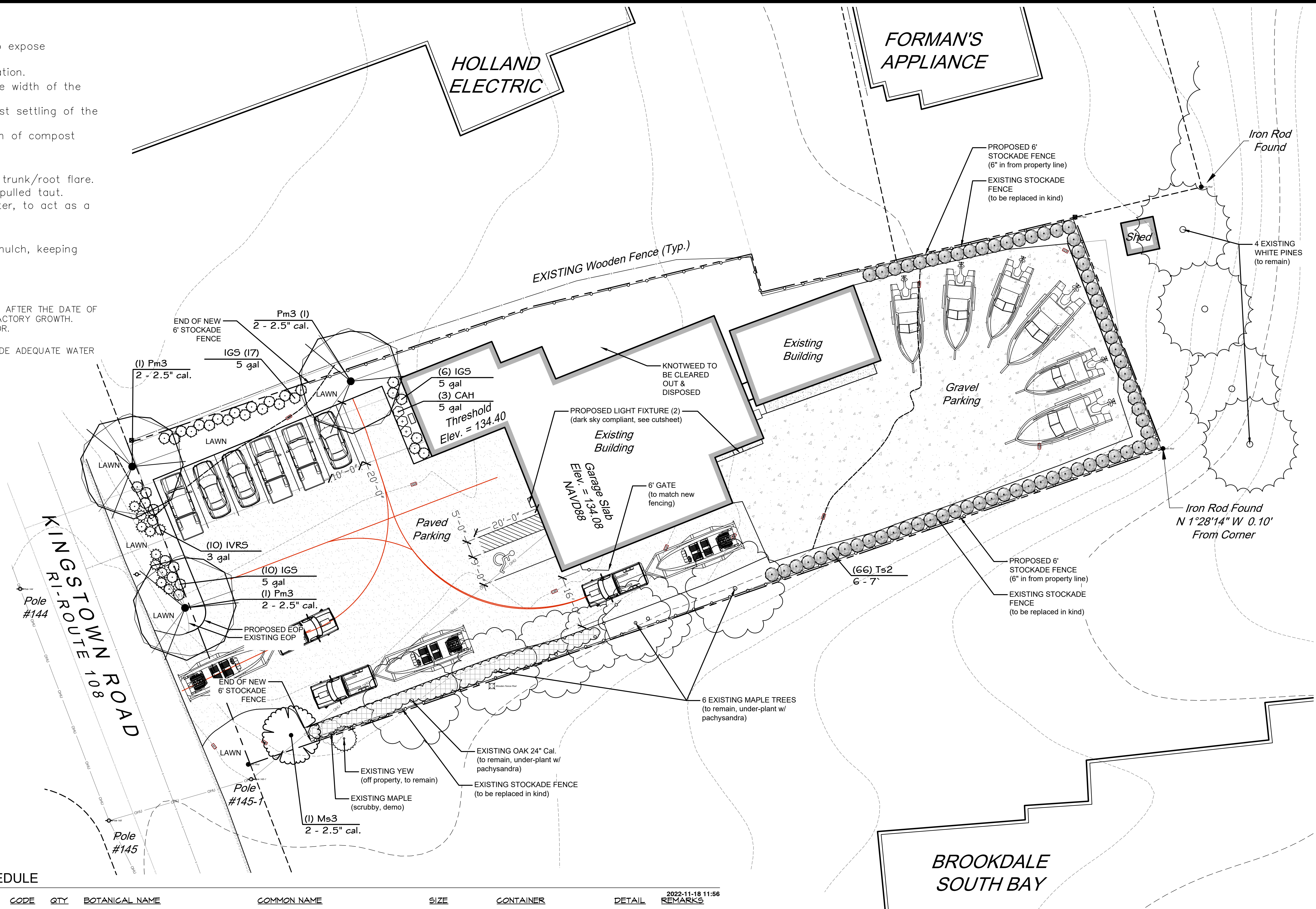
- UL E51 premium
- cULus
- IP65 rated
- UL wet location listed
- FCC
- RoHS compliant

Applications

- Building entrances
- Loading docks
- Walkways
- Storage facilities

PLANT SCHEDULE

TREES	CODE	QTY	BOTANICAL NAME	COMMON NAME	SIZE	CONTAINER	DETAIL	REMARKS	
	Ms3	1	Malus x 'Sugar Tyme' TM	Sugar Tyme Crab Apple	2 - 2.5" cal.	Cont.			
	Pm3	3	Platanus x acerifolia	London Plane	2 - 2.5" cal.	B&B			
	Ts2	66	Thuja occidentalis 'Smaragd'	Emerald Green Arborvitae	6 - 7'	B&B			
SHRUBS	CODE	QTY	BOTANICAL NAME	COMMON NAME	SIZE	CONTAINER	DETAIL	REMARKS	
	CAH	3	Clethra alnifolia 'Hummingbird'	Summersweet	5 gal	Cont.			
	IGS	33	Ilex glabra 'Shamrock'	Inkberry	5 gal	Cont.			
	IVRS	10	Ilex verticillata 'Red Sprite'	Red Sprite Winterberry	3 gal	Cont.			
GROUND COVERS	CODE	QTY	BOTANICAL NAME	COMMON NAME	SIZE	CONTAINER	SPACING	DETAIL	REMARKS
	Pg	111	Pachysandra terminalis 'Green Sheen'	Green Sheen Japanese Pachysandra	4"	Pot	24" o.c.		



NOT Issued For Construction

Revisions:

Job No: C-2022-09
Dwg No:
Drawn: MMB
Checked: MMB
Issued: 11.17.22

MATUNICK & N GROUP, INC.
P.O. Box 125 Wakefield, RI 02880
401-664-6522 www.MatunickDesignGroup.com

MDG
LANDSCAPE ARCHITECTURE

Sea & Land Yacht Works Landscape Plan

Planning Board Review
50 High St., 97
Wakefield, RI 02879

Applicant: **Sea & Land Yacht Works c/o Mike Garretson**
1845 Main Street
Wakefield, RI 02879

THIS DRAWING IS THE PROPERTY OF THE LANDSCAPE ARCHITECT. ANY UNAUTHORIZED USE OF THIS DRAWING WITHOUT WRITTEN PERMISSION IS PROHIBITED.

Sheet **1** of **1**
L1