

* 2-IDF

WINDOW SCHEDULE:

NO	ROUGH OPENING	CATALOG #	DIVIDED LIGHTS	REMARKS
1	2'-2 3/8" x 4'-4 7/8"	HG 20x22	6 OVER 6	DOUBLE HUNG
2	1'-10 3/8" x 4'-4 7/8"	HG 16x22	4 OVER 4	DOUBLE HUNG
3	2'-6 3/8" x 4'-4 7/8"	HG 24x22	6 OVER 6	DOUBLE HUNG
4	1'-10 3/8" x 4'-4 7/8"	HG 16x22	4 OVER 4	DOUBLE HUNG
5	2'-10 3/8" x 4'-4 7/8"	HG 28x22	6 OVER 6	DOUBLE HUNG
6	2'-10 3/8" x 4'-4 7/8"	HG 28x22	6 OVER 6	DOUBLE HUNG
7	1'-10 3/8" x 4'-4 7/8"	HG 16x22	4 OVER 4	DOUBLE HUNG
8	2'-6 3/8" x 4'-4 7/8"	HG 24x22	6 OVER 6	DOUBLE HUNG
9	1'-10 3/8" x 4'-4 7/8"	HG 16x22	4 OVER 4	DOUBLE HUNG
10	2'-10 3/8" x 4'-4 7/8"	HG 28x22	6 OVER 6	DOUBLE HUNG
10A	2'-10 3/8" x 3'-4 7/8"	HG 28x16	6 OVER 6	DOUBLE HUNG
11	4'-9" x 2'-4 1/2"	HG 56-28 CH	(SEE SHEET A-4)	ROUND TOP (RILEY)
12	1'-10 3/8" x 4'-0 7/8"	HG 16x20	4 OVER 4	DH. TOP OF WIND @ 5'-6"
13	2'-6 3/8" x 4'-0 7/8"	HG 24x20	6 OVER 6	DH
14	1'-10 3/8" x 4'-0 7/8"	HG 16x20	4 OVER 4	DH
15	1'-10 3/8" x 4'-0 7/8"	HG 16x20	4 OVER 4	DH
16	2'-6 3/8" x 4'-0 7/8"	HG 24x20	6 OVER 6	DH
17	1'-10 3/8" x 4'-0 7/8"	HG 16x20	4 OVER 4	DH
18	2'-10 3/8" x 4'-0 7/8"	HG 28x20	6 OVER 6	DH
19	8'-1" x 2'-1 1/2"	HG 2428/HG 4824	(SEE SHEET A-5)	DH @ 6'-0" (MICKEY HULLS)
19A	4'-1" x 2'-0 1/2"	HG 4824 CH	(SEE SHEET A-5)	ROUND TOP
20	2'-10 3/8" x 4'-0 7/8"	HG 28x20	6 OVER 6	DH
21	1'-10 3/8" x 4'-0 7/8"	HG 16x20	4 OVER 4	DH
22	2'-6 3/8" x 4'-0 7/8"	HG 24x20	6 OVER 6	DH
23	1'-10 3/8" x 4'-0 7/8"	HG 16x20	4 OVER 4	DH
24	1'-10 3/8" x 4'-0 7/8"	HG 16x20	4 OVER 4	DH
25	2'-6 3/8" x 4'-0 7/8"	HG 24x20	6 OVER 6	DH
26	1'-10 3/8" x 4'-0 7/8"	HG 16x20	4 OVER 4	DH
26A	4'-11 3/8" x 4'-4 7/8"	DOUBLE HG 24x20	6 OVER 6	DOUBLE HUNG
27	2'-10 3/8" x 4'-0 7/8"	HG 28x20	6 OVER 6	DOUBLE HUNG
27A	2'-10 3/8" x 1'-5 3/16"	HG 2816 DH	(SEE SHEET A-5)	ROUND TOP

- NOTE**
- ALL CATALOG NUMBERS SHOWN ARE AS MANUFACTURED BY HARVIN WINDOWS
 - ALL WINDOWS SHALL HAVE TRUE DIVIDED LIGHTS WITH ENERGY PANEL AS SHOWN IN THE DPG & THE SCHEDULE
 - PROVIDE SHUTTERS FOR WINDOWS AS SHOWN ON DRAWINGS
 - REPLACE EXISTING WINDOWS WITH HARVIN HARB-A-GARD WINDOWS HAVING TRUE DIVIDED LIGHTS & ENERGY PANEL

10-11-12
13-14-

$$\frac{500}{271} = \frac{P}{156}$$

RECEIVED IN
PLANNING DEPARTMENT

JUL 20 2022

TOWN OF
SOUTH KINGSTOWN, RI

NOTE: FIELD CHECK ALL DIMENSIONS



KEVIN S. MUNROE - ARCHITECT
63 COLUMBIA STREET, WAKEFIELD, RI 02879 (401) 780-4450

PROPOSED ADDITIONS & RENOVATIONS TO
THE OFFICE OF JOSEPH W. FRISSELLA, C.E.
1 ARNOLD ST., WAKEFIELD, RI 02879

DATE DRAWN: 10/11/22
DATE REVISION: 10/14/22
JOB NUMBER: 22-002
DRAWN BY: AM

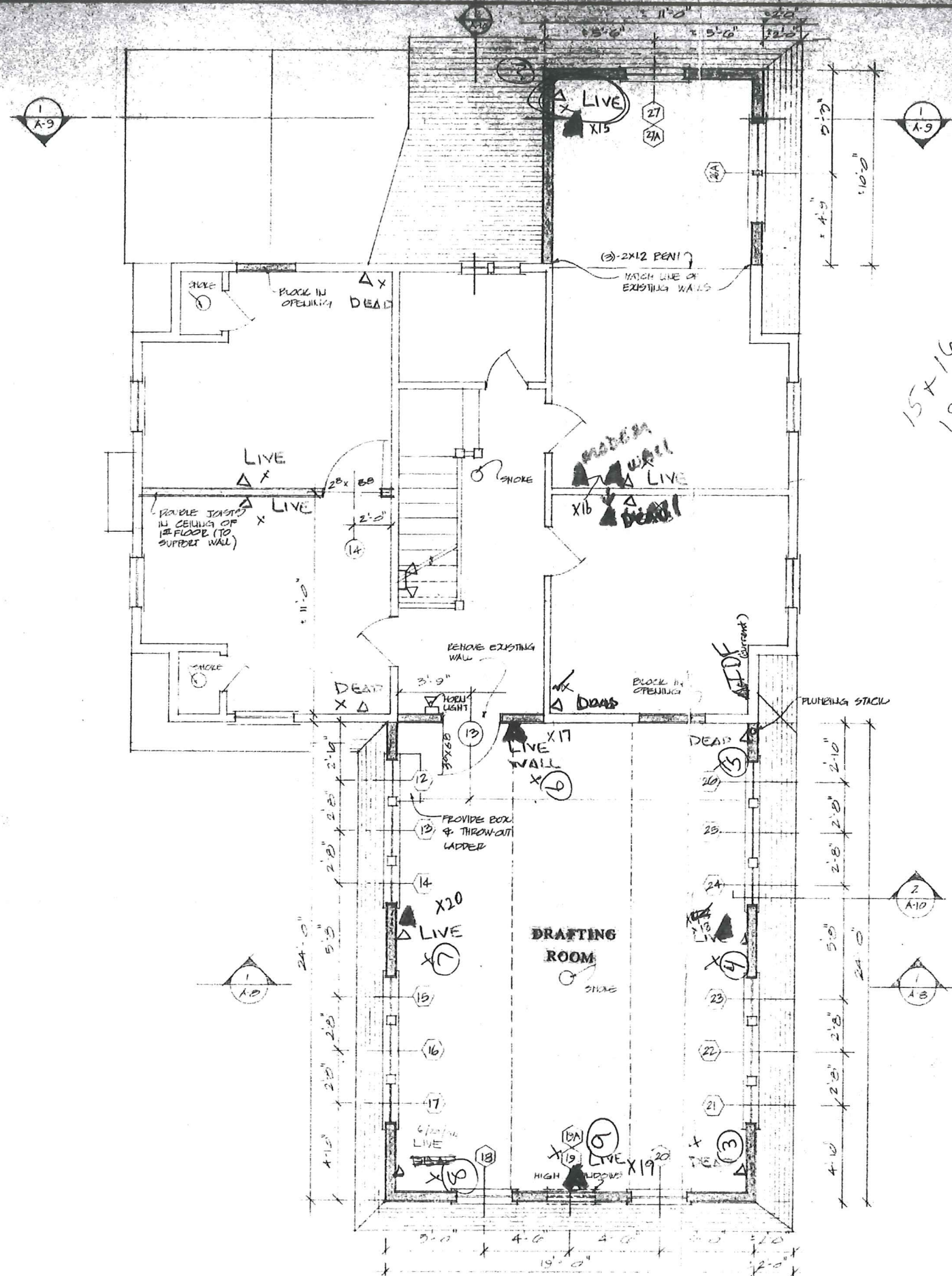
FIRST FLOOR
PLAN

SCALE: 1/4" = 1'-0"



A-2

R609



- NOTE
- 1 LOCATE 2 HEAT DETECTORS IN ATTIC
 - 2 REMOVE CAST IRON VENT PIPE IN ATTIC
 - 3 PROVIDE SUFFICIENT LIGHTING IN ATTIC

RECEIVED IN
PLANNING DEPARTMENT

JUL 20 2022

TOWN OF
SOUTH KINGSTOWN, RI

NOTE: FIELD CHECK ALL DIMENSIONS



KEVIN S. MUNROE - ARCHITECT
65 COLUMBIA STREET, WAKEFIELD, RI 02879
(401) 783-9650

PROPOSED ADDITIONS & RENOVATIONS TO
THE OFFICE OF JOSEPH W. FRISELLA, C.E.
3 ARNOLD ST., WAKEFIELD, RI 02879

DATE DRAWN	REVISED	JOB NUMBER	DRAWN BY
11/11/2020		0123	AMS

SECOND
FLOOR PLAN

SCALE: 1/4" = 1'-0"



A-3

R109



KEVIN S. MUNROE -- ARCHITECT
 65 COLUMBIA STREET, WAKEFIELD, RI 02879 (401) 783-9650



NOTE: MATCH LINE OF FASCIA
W/EXISTING FASCIA

PROPOSED ADDITIONS & RENOVATIONS TO

THE OFFICE OF JOSEPH W. FRISSELLA, C.E.

3 ARNOLD ST., WAKEFIELD, RI 02879

DATE DRAWN: FEB. 1988	REVISED:	JOB NUMBER: 8730	DRAWN BY: AMF
--------------------------	----------	---------------------	------------------

**SOUTH
ELEVATION**

SCALE: 1/4" = 1'-0"

RECEIVED IN
PLANNING DEPARTMENT

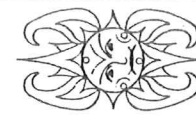
JUL 20 2022

TOWN OF
SOUTH KINGSTOWN, RI

NOTE: FIELD CHECK ALL DIMENSIONS

A-5

R609



KEVIN S. MUNROE — ARCHITECT
65 COLUMBIA STREET, WAKEFIELD, RI 02879 (401) 783-9650



PROPOSED ADDITIONS & RENOVATIONS TO

THE OFFICE OF JOSEPH W. FRISELLA, C.E.

3 ARNOLD ST., WAKEFIELD, RI 02879

DATE DRAWN: 11/20/20

REVISIONS: 0723

JOB NUMBER: 0723

DRAWN BY: AG

EAST
ELEVATION

SCALE: 1/4" = 1'-0"

RECEIVED IN
PLANNING DEPARTMENT

JUL 20 2022

TOWN OF
SOUTH KINGSTOWN, RI

NOTE: FIELD CHECK ALL DIMENSIONS

A-6

R609



KEVIN S. MUNROE - ARCHITECT
 65 COLUMBIA STREET, WAKEFIELD, RI 02879 (401) 783-9650

PROPOSED ADDITIONS & RENOVATIONS TO
 THE OFFICE OF JOSEPH W. FRISSELLA, C.E.

3 ARNOLD ST., WAKEFIELD, RI 02879

DATE DRAWN FEB 1922	REVISED	JOB NUMBER 8773	DRAWN BY AAG
------------------------	---------	--------------------	-----------------

WEST
 ELEVATION

SCALE: 1/4" = 1'-0"

RECEIVED IN
 PLANNING DEPARTMENT

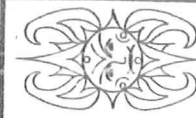
JUL 20 2022

TOWN OF
 SOUTH KINGSTOWN, RI

NOTE: FIELD CHECK ALL DIMENSIONS

A-7

R607



KEVIN S. MUNROE -- ARCHITECT
 65 COLUMBIA STREET, WAKEFIELD, RI 02879
 (401) 783-9650

PROPOSED ADDITIONS & RENOVATIONS TO

THE OFFICE OF JOSEPH W. FRISELLA, C.E.

3 ARNOLD ST., WAKEFIELD, RI 02879

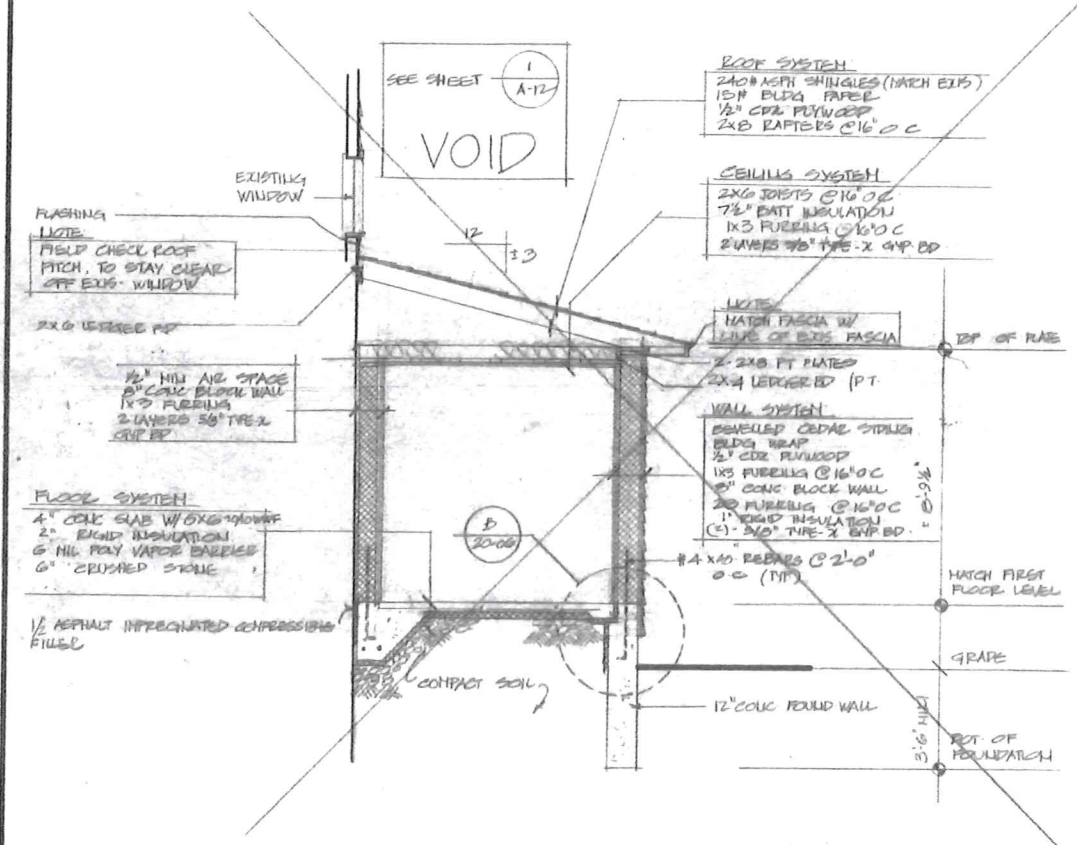
DATE DRAWN FEB 1996	REVISOR	JOB NUMBER 8133	DRAWN BY AAG
------------------------	---------	--------------------	-----------------

RECEIVED IN
PLANNING DEPARTMENT

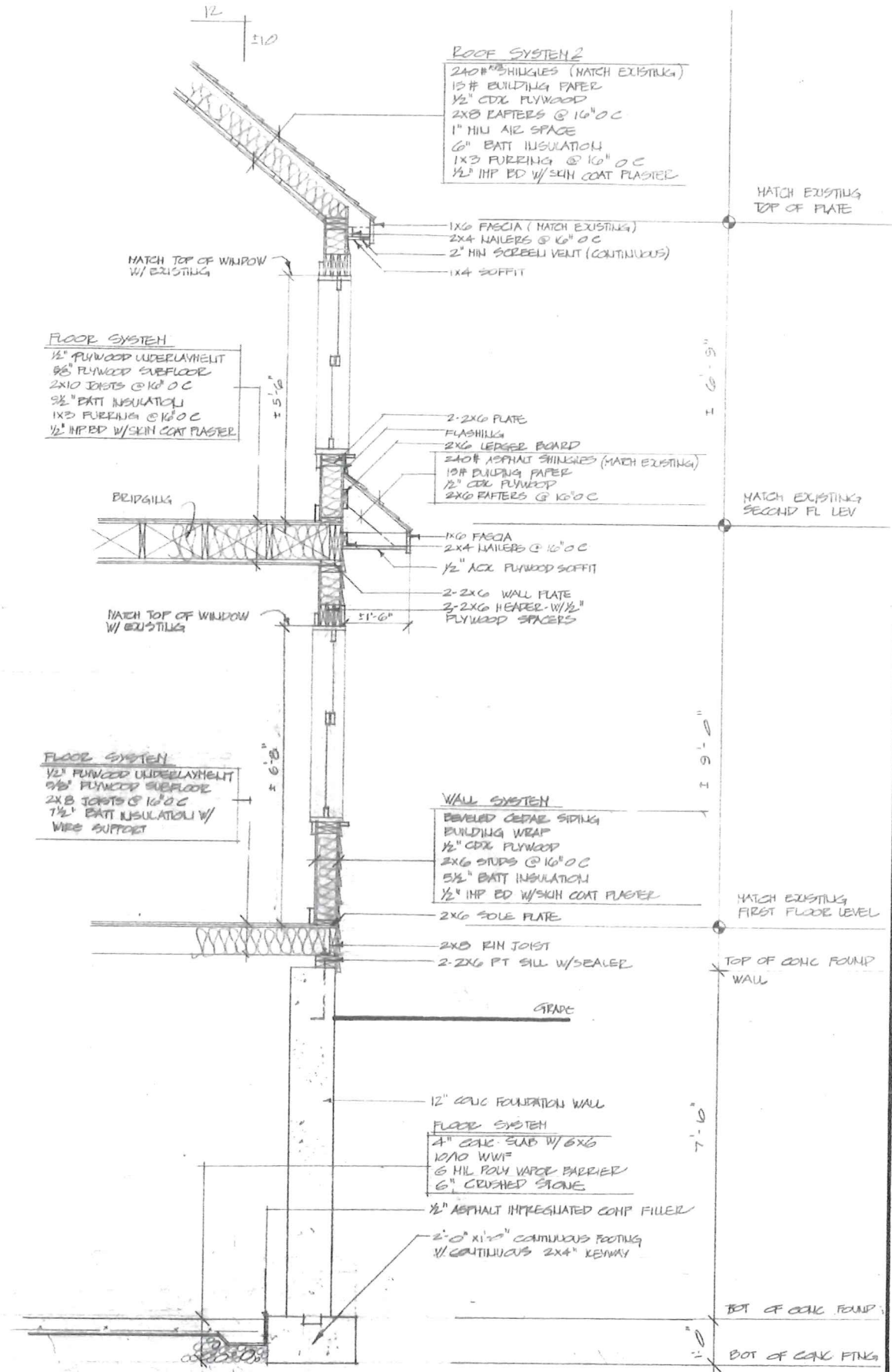
JUL 20 2022

TOWN OF
SOUTH KINGSTOWN, RI

R609
A-10



CROSS SECTION
SCALE: 1/4" = 1'-0"



SECTION

NOTE: FIELD CHECK ALL DIMENSIONS