

LANDSCAPE DESIGN  
PREPARED FOR  
**BURGER KING**

OLD TOWER HILL ROAD, WAKEFIELD, RHODE ISLAND  
JSC MANAGEMENT GROUP

BY  
**REBECCA MARIE NOLAN, RLA**

MARCH 30, 2022

**SHEET INDEX**

L-100	TITLE SHEET
L-102	LANDSCAPE PLAN
L-103	PLANTING PLAN
L-104	LANDSCAPE DETAILS

LANDSCAPE ARCHITECT:

Rebecca M. Nolan, RLA

Landscape Architecture & Planning  
Storington, CT 06379  
p. 860.912.2500 | rmlandscape.com

Rebecca Marie Nolan, ASLA | Registered Landscape Architect

CIVIL:



**BURGER KING**  
**104 OLD TOWER HILL ROAD**  
**WAKEFIELD, RHODE ISLAND**  
**JSC MANAGEMENT GROUP**

DATE: MARCH 30, 2022

DRAWN BY: RMN

JOB NO: 202204

SCALE:

FILENAME: i-Sheets\_Burger King\_Wakefield

REVISIONS:

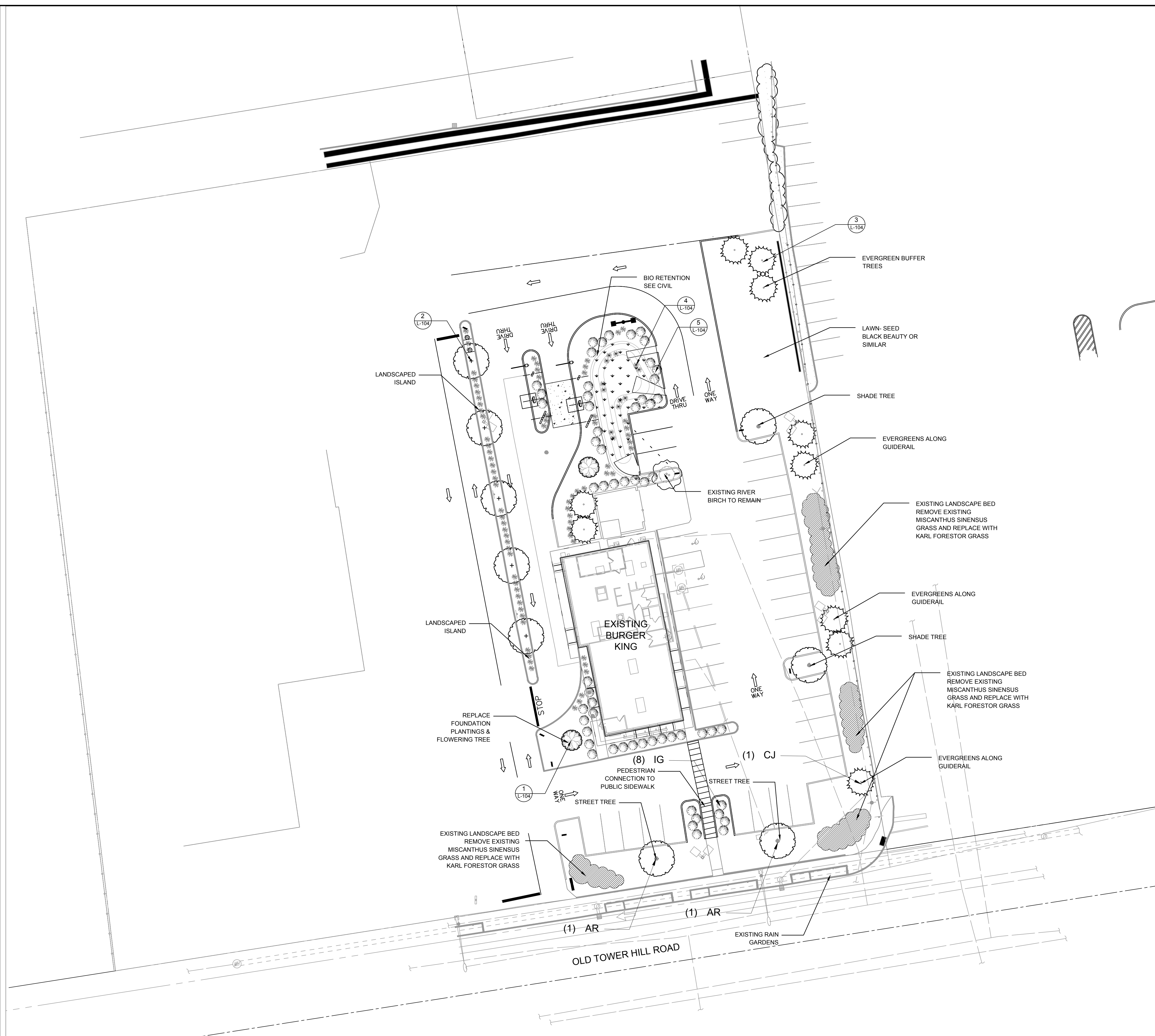
Rebecca Marie Nolan, ASLA | Registered Landscape Architect

**TITLE SHEET**

SHEET NO.

**L-100**

PROGRESS SET NOT FOR CONSTRUCTION



■ SITE DETAIL KEYNOTES

PLANTING DETAILS

MULTISTEM TREE PLANTING	1/L-104
DECIDUOUS TREE PLANTING	2/L-104
EVERGREEN PLANTING	3/L-104
PERENNIAL PLANTING	4/L-104
SHRUB PLANTING	5/L-104

■ LAYOUT NOTES

1. LAYOUT AND VERIFY DIMENSIONS PRIOR TO CONSTRUCTION. BRING DISCREPANCIES TO THE ATTENTION OF THE LANDSCAPE ARCHITECT.
2. WRITTEN DIMENSIONS TAKE PRECEDENCE OVER SCALE. DO NOT SCALE DRAWINGS.
3. WHERE DIMENSIONS ARE CALLED AS 'EQUAL' SPACE REFERENCED ITEMS EQUALLY, MEASURED TO THEIR CENTER LINES (A CONSISTENT EDGE).
4. INSTALL INTERSECTING ELEMENTS AT 90 DEGREE ANGLES TO EACH OTHER UNLESS OTHERWISE NOTED.

LANDSCAPE ARCHITECT:  
**Rebecca M. Nolan, RLA**  
 Landscape Architecture & Planning  
 Storington, CT 06379  
 p. 860.912.2500 | rmlandscape.com

Rebecca Marie Nolan, ASLA | Registered Landscape Architect



**BURGER KING**  
**104 OLD TOWER HILL ROAD**  
**WAKEFIELD, RHODE ISLAND**  
 JSC MANAGEMENT GROUP

DATE: MARCH 30, 2022  
 DRAWN BY: RMN  
 JOB NO: 202204  
 SCALE: 1"=20'  
 FILENAME: i-Sheets\_Burger King\_Wakefield

REVISIONS:

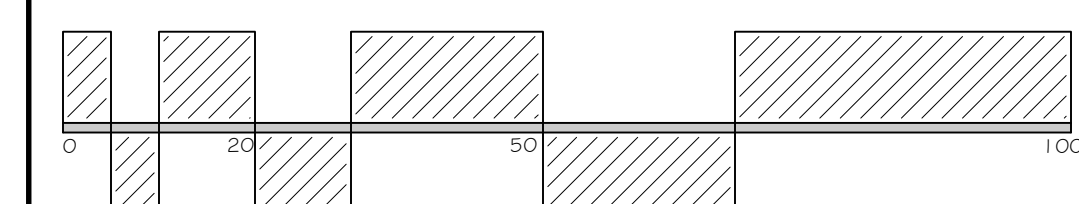
Rebecca Marie Nolan, ASLA | Registered Landscape Architect

**LANDSCAPE PLAN**

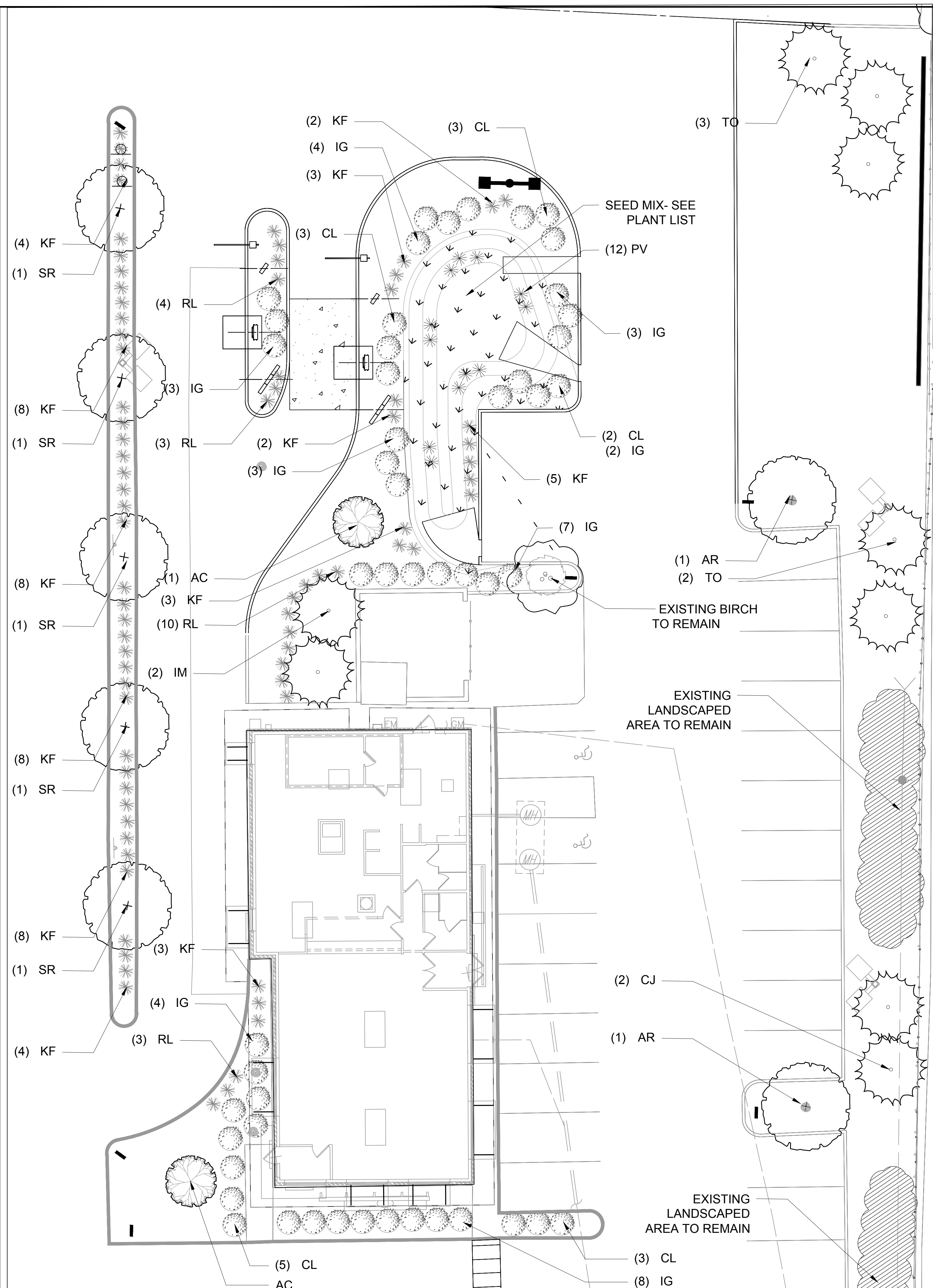
SHEET NO.

**L-102**

SHEET: 2 of 4



TO SCALE WHEN PLOTTED ON 24x36  
 PROGRESS SET NOT FOR CONSTRUCTION



■ PLANTING SCHEDULE

QTY	KEY	BOTANICAL NAME	COMMON NAME	SIZE	COMMENTS
<b>EVERGREEN BUFFERS</b>					
5	TO	<i>Thuja occidentalis 'Nigra'</i>	Black Arborvitae	6- 8' HT	spacing 5' OC
3	CJ	<i>Cryptomeria japonica</i>	Japanese Cedar	6-8' HT	sub Thuja plicata heavy
<b>TREES</b>					
4	AR	<i>Acer rubrum 'October Glory'</i>	Red Maple	2.5-3' CAL	sub Pin Oak- prune branches 6' HT
2	AC	<i>Amelanchier canadensis 'Autumn Brilliance'</i>	Serviceberry	1.5-2' CAL	Multistem
5	SR	<i>Syringa reticulata 'Ivory Silk'</i>	Japanese Tree Lilac	2.5-3' CAL	Singlesstem- prune branches 6' HT
<b>PERENNIALS &amp; SHRUBS</b>					
60	KF	<i>Calamagrostis x acutiflora 'Karl Foerster'</i>	Feather Reed Grass	3 Gallon	plant 3-4' OC
16	CL	<i>Clethra alnifolia 'Hummingbird'</i>	Summersweet	3 Gallon	dwarf species
42	IG	<i>Ilex glabra 'Shamrock'</i>	Holly	3 Gallon	no hybrids- dwarf species only
2	IM	<i>Ilex meserveae 'Blue Maid'</i>	Blue Maid Holly	5 Gallon	1 M, 1 F
12	PV	<i>Panicum virgatum</i>	Switchgrass		top of slope
20	RL	<i>Rudbeckia fulgida 'Goldstrum'</i>	Orange Coneflower	1 Gallon	
<b>BOSWALE PERENNIAL SEED MIX - 500 SF</b>					
CUSTOM or DETENTION BASIN @ SEED MIX by Prairie Moon® Nursery or approved equal					
10%	IR	<i>Iris versicolor</i>	Blue Flag	Basin	
10%	CPE	<i>Carex pensylvanica</i>	Pennsylvania Sedge	Slope	
10%	CSJ	<i>Carex stricta</i>	Tussock Sedge	Basin	
10%	EP	<i>Echinacea purpurea</i>	Coneflower	Basin	
10%	EM	<i>Eupatorium maculatum</i>	Joe-Pye Weed	Basin	
10%	LF	<i>Lolium perenne</i>	Perennial ryegrass	Slope	
10%	SH	<i>Schizachyrium scoparium</i>	Little Bluestem	Basin	
10%	SS	<i>Solidago sempervirens</i>	Seaside Goldenrod	Basin	
10%	SN	<i>Symphoricarpos novae-angliae</i>	New England Aster	Basin	
10%	PHM	<i>Panicum virgatum</i>	Switchgrass	Slope	

■ PLANTING NOTES

- PLANT MATERIAL SHALL BE FURNISHED AND INSTALLED AS INDICATED, INCLUDING ALL LABOR, MATERIALS, PLANTS, EQUIPMENT, INCIDENTALS, AND CLEAN-UP.
- THE CONTRACTOR SHALL BE RESPONSIBLE FOR PLANTING AT CORRECT GRADES AND ALIGNMENT. LAYOUT TO BE APPROVED BY LA PRIOR TO INSTALLATION.
- PLANTS SHALL BE TYPICAL OF THEIR SPECIES AND VARIETY. HAVE NORMAL GROWTH HABITS; WELL DEVELOPED BRANCHES, DENSELY FOLIATED, VIGOROUS ROOT SYSTEMS AND BE FREE FROM DEFECTS AND INJURIES.
- CONTRACTOR SHALL REPORT ANY SOIL OR DRAINAGE CONDITIONS CONSIDERED DETRIMENTAL TO THE GROWTH OF PLANT MATERIAL.
- ALL PLANT MATERIAL SHALL BE GUARANTEED BY THE CONTRACTOR TO BE IN VIGOROUS GROWING CONDITION. PROVISIONS SHALL BE MADE FOR A GROWTH GUARANTEE OF AT LEAST TWO YEARS FROM THE DATE OF ACCEPTANCE FOR TREES AND SHRUBS. REPLACEMENTS SHALL BE MADE AT THE BEGINNING OF THE FIRST SUCCEEDING PLANTING SEASON. ALL REPLACEMENTS SHALL HAVE A GUARANTEE EQUAL TO THAT STATED ABOVE.
- INsofar AS IT IS PRACTICABLE, PLANT MATERIAL SHALL BE PLANTED ON THE DAY OF DELIVERY. IN THE EVENT THIS IS NOT POSSIBLE, THE CONTRACTOR SHALL PROTECT, IRRIGATE & CARE FOR STOCK NOT PLANTED.
- QUALITY AND SIZE OF PLANTS, SPREAD OF ROOTS, AND SIZE OF BALLS SHALL BE IN ACCORDANCE WITH ANSI Z60 (REV. 1980) "AMERICAN STANDARD FOR NURSERY STOCK" AS PUBLISHED BY THE AMERICAN ASSOCIATION OF NURSERYMEN, INC.
- ALL PLANTS SHALL BE PLANTED IN AMENDED TOP SOIL THAT IS THOROUGHLY WATERED AND TAMPED AS BACK FILLING PROGRESSES. PLANTING MIX TO BE AS SHOWN ON PLANTING DETAILS. LARGE PLANTING AREAS TO INCORPORATE FERTILIZER AND SOIL CONDITIONERS AS STATED IN PLANTING SPECIFICATIONS.
- PLANTS SHALL NOT BE BOUND WITH WIRE OR ROPE AT ANY TIME SO AS TO DAMAGE THE BARK OR BREAK BRANCHES. PLANTS SHALL BE HANDLED FROM THE BOTTOM OF THE BALL ONLY.
- PLANTING OPERATIONS SHALL BE PERFORMED DURING PERIODS WITHIN THE PLANTING SEASON WHEN WEATHER AND SOIL CONDITIONS ARE SUITABLE AND IN ACCORDANCE WITH ACCEPTED LOCAL PRACTICE. PLANTS SHALL NOT BE INSTALLED IN TOPSOIL THAT IS IN A MUDDY OR FROZEN CONDITION.
- SET ALL PLANTS PLUMB AND STRAIGHT. SET AT SUCH LEVEL THAT A NORMAL OR NATURAL RELATIONSHIP TO THE CROWN OF THE PLANT WITH THE GROUND SURFACE WILL BE ESTABLISHED. LOCATE PLANT IN THE CENTER OF THE PIT.
- ALL INJURED ROOTS SHALL BE PRUNED UTILIZING CLEAN, SHARP TOOLS TO MAKE CLEAN ENDS BEFORE PLANTING.
- EACH TREE AND SHRUB SHALL BE PRUNED IN ACCORDANCE WITH STANDARD HORTICULTURAL PRACTICE TO PRESERVE NATURAL CHARACTER OF PLANT. PRUNING SHALL BE DONE WITH CLEAN, SHARP TOOLS.
- ALL PLANTING BEDS SHALL BE MULCHED WITH 2" LAYER OF DOUBLE SHREDDED HARDWOOD BARK MULCH- NO DYED RED MULCH
- ALL DISTURBED AREAS TO BE TREATED WITH 3" TOP SOIL & SEEDED IN ACCORDANCE WITH PERMANENT STABILIZATION METHODS.

■ PLANT MATERIAL HOLDING

- PROTECT ALL TREES AND SHRUBS THAT ARE TO REMAIN THROUGHOUT THE ENTIRE PROJECT. ALL PROTECTIVE FENCES AND BARRICADES MUST REMAIN INTACT DURING CONSTRUCTION. DO NOT USE THESE BARRICADES AS AREAS FOR STORAGE AND STOCKPILING. BARRICADES SHALL BE KEPT FREE AND CLEAR OF DEBRIS AND MATERIALS AT ALL TIMES.
- EXISTING PLANTS THAT ARE TAGGED BY LANDSCAPE ARCHITECT FOR TRANSPLANTING ARE TO BE MOVED TO A TEMPORARY HOLDING LOCATION TO BE LOCATED ON THE PREMISES AS DIRECTED BY LANDSCAPE ARCHITECT.
- CONTRACTOR SHALL PROVIDE A TEMPORARY AUTOMATED WATERING SYSTEM FOR THE PURPOSE OF MAINTAINING THESE PLANTS.
- PLANTS SHALL BE HEALED IN OVER THE TOP OF EACH ROOT BALL WITH WOOD CHIP MULCH FOR ADDED PROTECTION FROM DRYING AND STABILITY FROM OVERTURNING.
- SURROUND HOLDING NURSERY WITH 4' BARRIER FENCING. AN IDEAL LOCATION SHOULD INCLUDE AT LEAST 3 HOURS OF SUNLIGHT BUT NOT MORE THAN 6 HOURS OF DIRECT LIGHT EACH DAY.

■ LANDSCAPE MAINTENANCE

- ALL LANDSCAPE PLANTINGS SHALL BE MAINTAINED IN A HEALTHY CONDITION AT ALL TIMES. ANY DEAD OR DISEASED PLANTS SHALL BE REPLACED "IN KIND" BY THE LANDSCAPE CONTRACTOR DURING 2 YEAR PERIOD OF ESTABLISHMENT AND BY OWNERS MAINTENANCE CONTRACTOR AFTER WARRANTY PERIOD.
- MONITOR INVASIVE PLANTS QUARTERLY AND USE HAND METHODS FOR REMOVAL
- MONTHLY WEEDING DURING THE GROWING SEASON USING NON-CHEMICAL METHODS
- CONTRACTOR IS RESPONSIBLE FOR WATERING DURING PERIOD OF ESTABLISHMENT
- MINIMIZE FERTILIZER AND PESTICIDE USE
- ORGANIC FERTILIZER MAY BE APPLIED IN SPRING
- REPLACE BIO RETENTION MULCH EVERY OTHER YEAR
- PRUNE TREES AND SHRUBS ANNUALLY TO REMOVED DEAD OR DISEASED BRANCHES
- STREET TREE BOTTOM BRANCHES AT 6' HT MIN
- TURF MOWED TO MIN OF 4"

LANDSCAPE ARCHITECT:  
**Rebecca M. Nolan, RLA**  
 Landscape Architecture & Planning  
 Storington, CT 06379  
 p. 860.912.2500 | rmlandscape.com

Rebecca Marie Nolan, ASLA | Registered Landscape Architect  
 CIVIL: **APD**  
**ENGINEERING ARCHITECTURE**  
 615 POND ROAD, SUITE 100, NEW CANAAN, CT 06840  
 860.912.2500 | www.apd.com

**BURGER KING**  
**104 OLD TOWER HILL ROAD**  
**WAKEFIELD, RHODE ISLAND**  
 JSC MANAGEMENT GROUP

DATE: MARCH 30, 2022  
 DRAWN BY: RMN  
 JOB NO: 202204  
 SCALE: 1"=10'  
 FILENAME: i-Sheets\_Burger King\_Wakefield

REVISIONS:

Rebecca Marie Nolan, ASLA | Registered Landscape Architect

**PLANTING PLAN**

SHEET NO.

**L-103**

SHEET: 3 of 4

